

ROBERT  
EDSON  
SWAIN  
A I A

**EDGE**  
ENVIRONMENTAL DESIGN GROUP

**D**esign For Place

# **D***esign For Place*

## **Introduction: place, context, and integrity**

The extent to which a person recognizes or recalls a particular place distinct from others is a measure of the identity, or sense, of that place. Often contemporary architecture strives for “beauty” in whatever willful or whimsical mode the individual designer brings to the project, without genuine regard for the experience of those who will use the place. But when the experience is fundamental to buildings and landscapes a sense of place can be achieved where the individual is more likely to identify with the place and to feel that he or she belongs there. Sense of place is cultivated by the mutual fit of physical form and behavior, by the integration of activities and physical surroundings, and it results in a special harmony between user and space. Thus, we must look at place and person together.

*Every spirit builds itself a house, beyond its house a world, beyond its world a heaven. Know there that the world exists for you – build therefore your own world.*

*– Ralph Waldo Emerson*

## **Sense of Place: Coherence and Character.**

Coherent space is visually understandable to the user. But the coherence does not mean the monotony of a simple repeated pattern. Pattern only becomes interesting when it attracts and engages the user, when it is simultaneously both complex and orderly enough to be readable and understandable. There are two other notable aids to coherence: one is smallness and the other is hierarchy. Breaking large places down into smaller more intimate spaces precludes boredom and alienation. Street arrangements that do this well (as in historic villages and international markets) give each space its own feeling of place within the larger context. A clear hierarchy of parts is essential to making sense of the environmental pattern. Dominant elements in any pattern act as visual and functional clues that help users relate minor parts to each other and to the whole. Character is an essential part of the experience of place. When we visit a foreign city or region of the United States we are struck by its individual character. Character, derived from regional cultural sources, is determined by the physical nature of a place. What is the scale of the dominant buildings containing the space? What vernacular architectural idiom appears? What materials are used? How high is the space, how wide? How are secondary elements – such as columns,

windows, and lighting – detailed? Character depends on how elements are put together and how they help to articulate the form of the building and landscape.

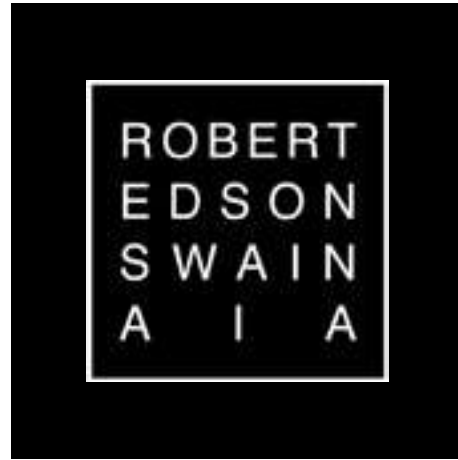
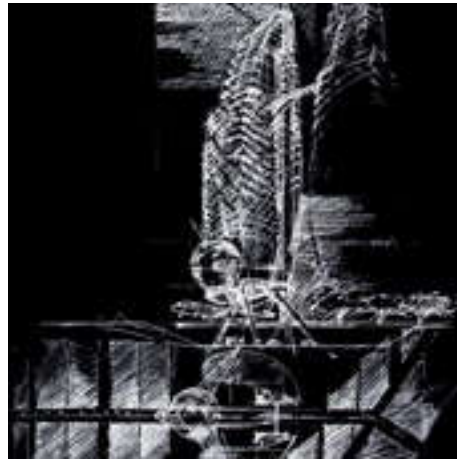
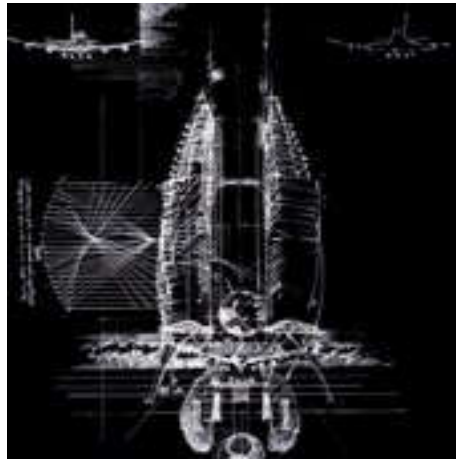
## **Context**

Contextualism is the design response to a building or garden’s surroundings and community. This can be a response to neighboring buildings – through height, setback, shape, massing, and scale; it can occur in response to the street and to the public – through its use of proportion, materials, articulation of openings, use of color, and street landscaping. Contextual architecture is based on respect, not on ego or elitism.

## **Integrity**

Integrity in architecture means truthful expression through an honest use of structure and materials. Its inspiration is a forthright and practical expression. It is timeless, having a historical understanding of architecture, and it combines collective knowledge with contemporary technology. It does not mean following the latest architectural fashion trends. Buildings and landscapes are enduring commitments not stylistic whims – even as they embrace the particular spirit of the recent.







## Robert Edson Swain, AIA — Biography

Robert Edson Swain’s career is distinguished by the application of design process as a primary tool. He is a practicing Architect, Master Planner, Industrial Designer, Landscape Designer, and was recently appointed, Full Professor of Architecture and Innovation at the University of Naples (S.U.N.), Italy. He serves on the Board of Seattle-based Rhodes Architectural Stone, a group that sources and manufactures stone products in China. He is called on to make presentations at international conferences and serves on international design juries. Mr. Swain has received numerous design awards for projects in his diverse portfolio.

Mr. Swain’s experience ranges from master site developments to landscape design, commercial to residential, health spas to institutions, all with emphasis on environmentally conscious and sustainable design. His unique ability to conceptualize and communicate design achieves extraordinary results from the largest scale planning to precise detail. From his heritage in New England boat building to a passion for Italian design, he has perfected the utilization of limited space and developed a unique ability to transcend traditional design solutions. Functional, individualized and timeless designs have earned him an international reputation for purposeful innovation.

Work with Boeing Chairman Phil Condit has produced two residences, aircraft industrial design research and a 737 jet interior for personal/business use. Numerous project collaborations are in various stages of development with top Microsoft, Amazon and Cisco System executives and an NFL coach. Project pursuits with General Nutrition Center’s past CEO Greg Horn has reconfigured 5,800 retail stores and has also extended to a personal Florida residence. A collaborative Italian/American academic exchange program, orchestrated and instructed by Mr. Swain, is funded in part by the Kaiser Professorship. Design is underway with Nick and Markell Kaiser to develop an eco-resort in the Canadian Gulf Islands. Two mixed-use revitalization projects include: a signature 12 story gateway to the city of Athens, Greece — a defining link between the Aegean seaport and the Acropolis; and a concept proposal for The Boeing Company, evaluating Seattle, Washington as a site for Boeing’s world headquarters.

Robert Edson Swain provides visionary design and pragmatic consulting skills in numerous scenarios, from the intimate settings of residential projects to the boardrooms of global corporations.



## EDGE, LLC

We integrate the responsiveness and spirit of a small entrepreneurial business with the depth and capabilities of larger corporations. As a focused design studio of creative individuals we are able to work globally in teams of highly qualified professionals.

Clients receive direct individualized attention and leadership with a speed and efficiency uncharacteristic of larger bureaucratic structures. Our flexible team building approach allows for collaboration with professionals that offer the specific skills necessary to achieve project goals.

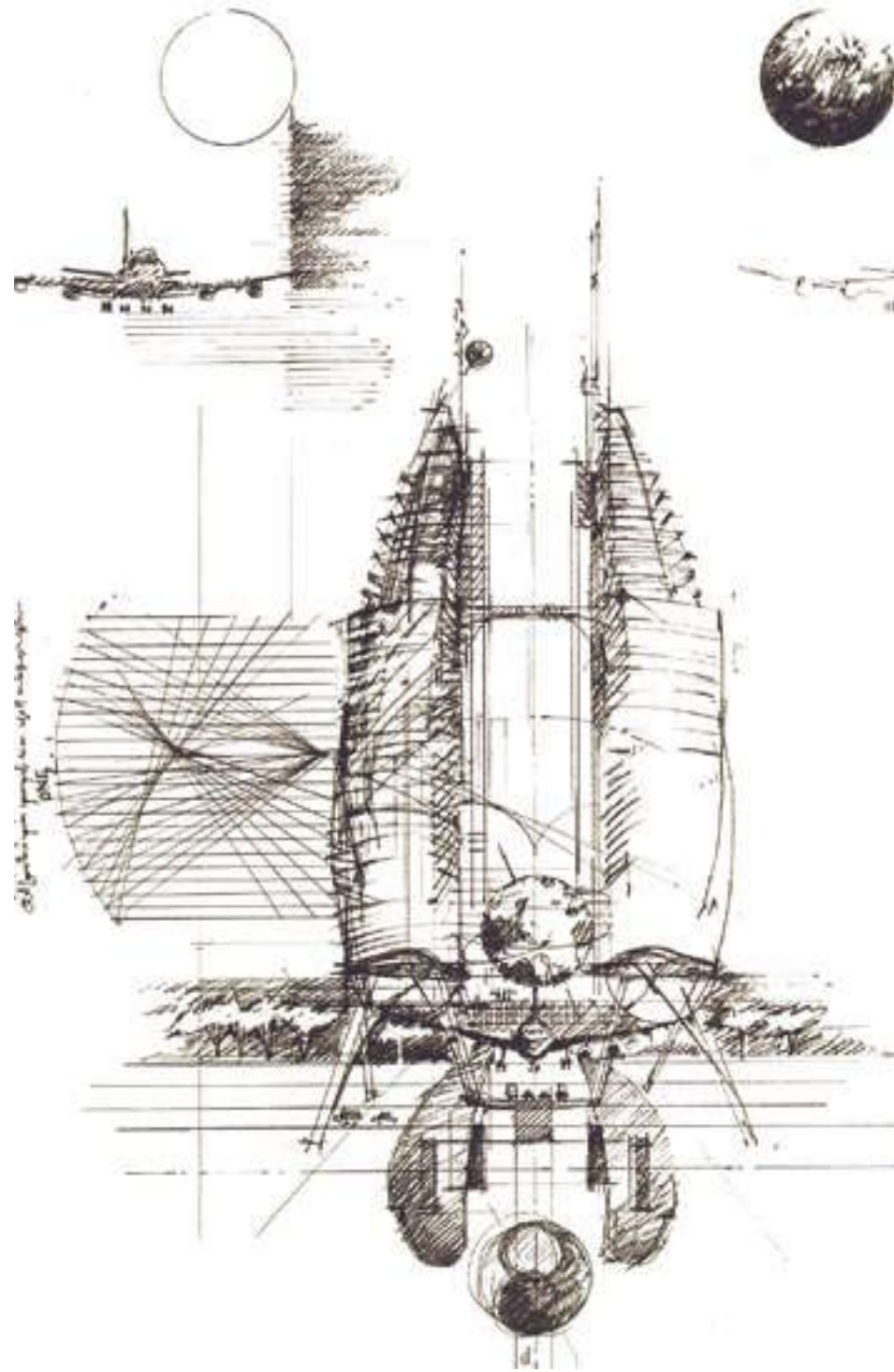
With a combination of strong face-to-face and virtual communication skills we are able to deliver the clarity of process and product required to achieve success. Our projects are diverse in scope and range from regional to international. We are committed to innovation in design, clear vision and building diverse partnerships. A successful business practice requires active listening, integrity, cost consciousness, deadlines and profitability!

# **D**esign For Place

## DESIGN APPROACH

We embrace the complex challenge of design and are proud to have produced the vast array of work offered in this presentation. Good architecture and landscape designs demonstrate cultural and environmental integrity. They are forthright and practical, as well as

aesthetically inspired. Commitment to the spirit of invention and integrity are essential. We walk the edge of conceiving and realizing environments that serve needs while remaining conscious of environmental sustainability.



Proposed Boeing World Headquarters  
③ Seattle, WA



Riverbend Office Park ③  
Watertown, MA



The goal of sustainability is to generate economic, ecological, social and intellectual benefits. Sustainability, which fulfills the desire of people for an ever better quality of life while protecting valuable resources, must be oriented to the future. This approach is rapidly gaining importance in our communities and industries, and brings with it a vast potential for growth.







Northeastern Mortgage Company ☉  
Headquarters  
Cambridge, MA

Clear communication is the basis of successful design. The ability to focus, to look and listen, and to absorb — without preconception — what a given setting and a particular client express. Collaborative teams contribute skills and creative spirit to express true joy in functional beauty. Our collaborative approach stresses learning as a life-long commitment. It goes beyond the classroom and must be engaged by professionals throughout their careers. The natural energy of enthusiasm brings joy to the process of design, engages the client, inspires the design team, and sustains the positive experience to project completion. We push and are pushed to achieve, relishing the process and celebrating the results.





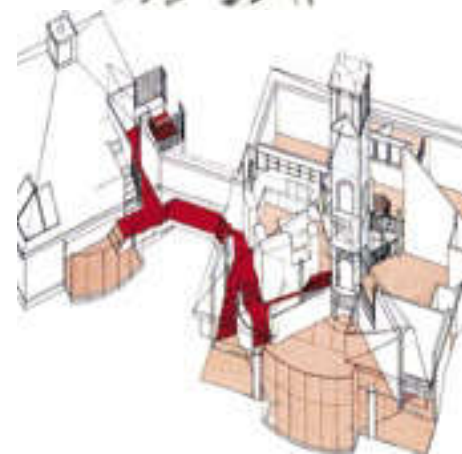
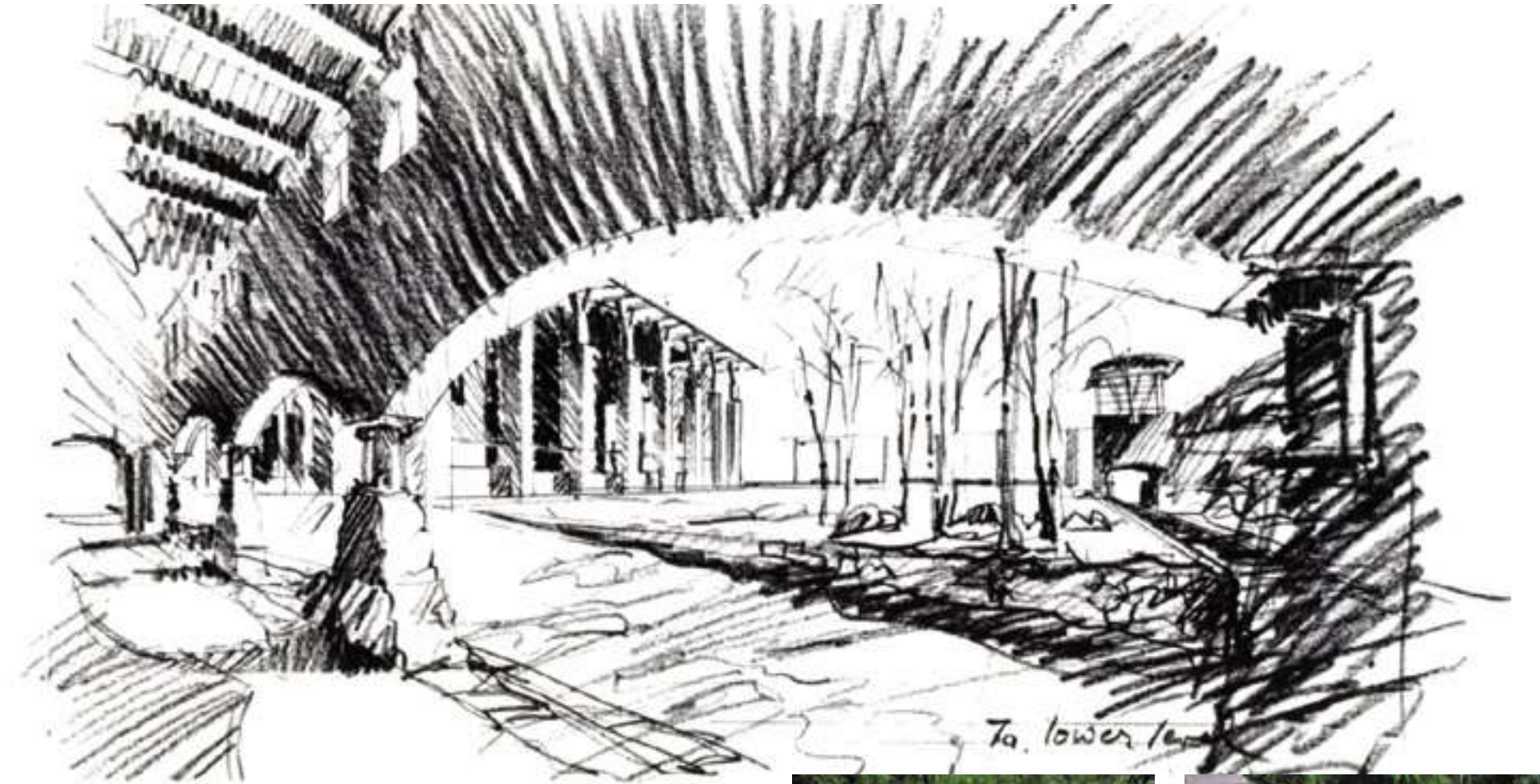


*“Bob couples boundless energy with architectural brilliance. His designs demonstrate an incredible integrity both in structure and in surroundings.”*

*– Stuart Johnson. GID Multiple Projects, Boston, MA*



Krone Properties  
Business Research Center ☒  
Redmond, WA ☒







Hall Estate  
 Mixed Use Development  
 65 Acres  
 ☉ Hull, MA

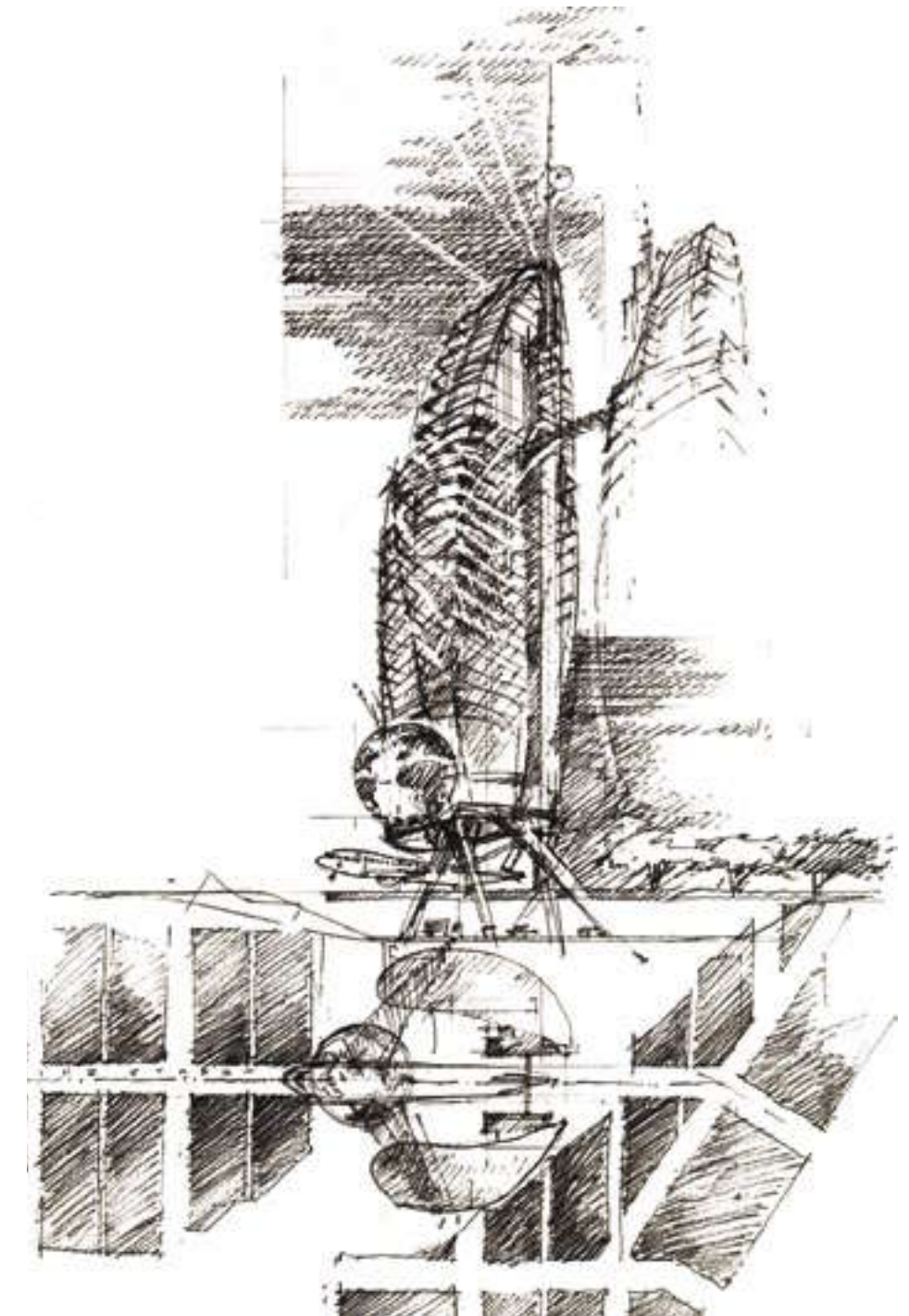
*“After many projects with Bob, I still reel from the brilliance of his simple, beautiful solutions to complex problems. He is the best there is.”*  
 – Brad Wagstaff. *Old Inn on the Green, New Marlborough, MA*



North Shore Music Theatre  
 ☉ Beverly, MA



Proposed Boeing World Headquarters  
 Seattle, WA ☉





# Design For Place

*Mixed-Use*

*Recreation*

*Office*

*Retail*

*Hospitality*

*Housing*

We believe the issues of place, context, and integrity are essential to community definition. Creativity combines these attitudes with the functional demands of a market. It is what transforms buildings into architecture and locations into places. Successful form-giving is evolutionary, a deliberate and mutual process that is constantly reflected upon and questioned by both architect and client.



Bay Farm Village ⊙  
Duxbury, MA

*“The design is simple yet elegant; the building is perfect for its environment; it truly belongs to the community.”*  
– Lidio Rainaldi. Medical/Dental Center, Gallup, NM



Samoset at Winnepesaukee ⊙  
Gilford, NH



⊙ Nature's Northwest  
⊙ Portland, OR

Franklin Pierce College ⊙  
Rindge, NH

North Shore Music Theatre ⊙  
Beverly, MA







⊙ Riverbend Office Park  
Watertown, MA



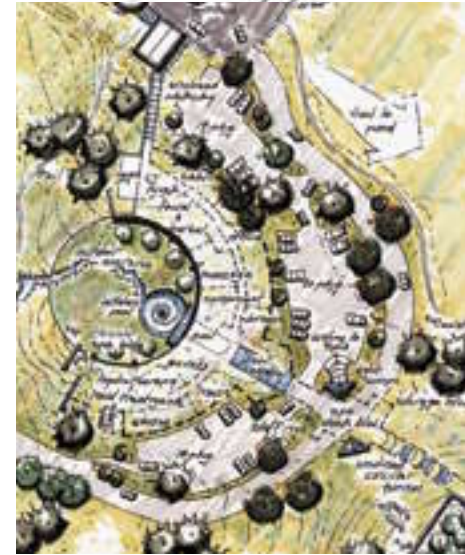
Franklin Pierce College ⊙  
Rindge, NH

The Hall Estate ⊙  
Hull, MA

A new, innovative mixed-use design puts to rest outmoded patterns of development. The design expresses the concept of a New England coastal village. Working closely with the developer, public relations firms and the town, the design has received town approval, even in an environment of skepticism toward development.



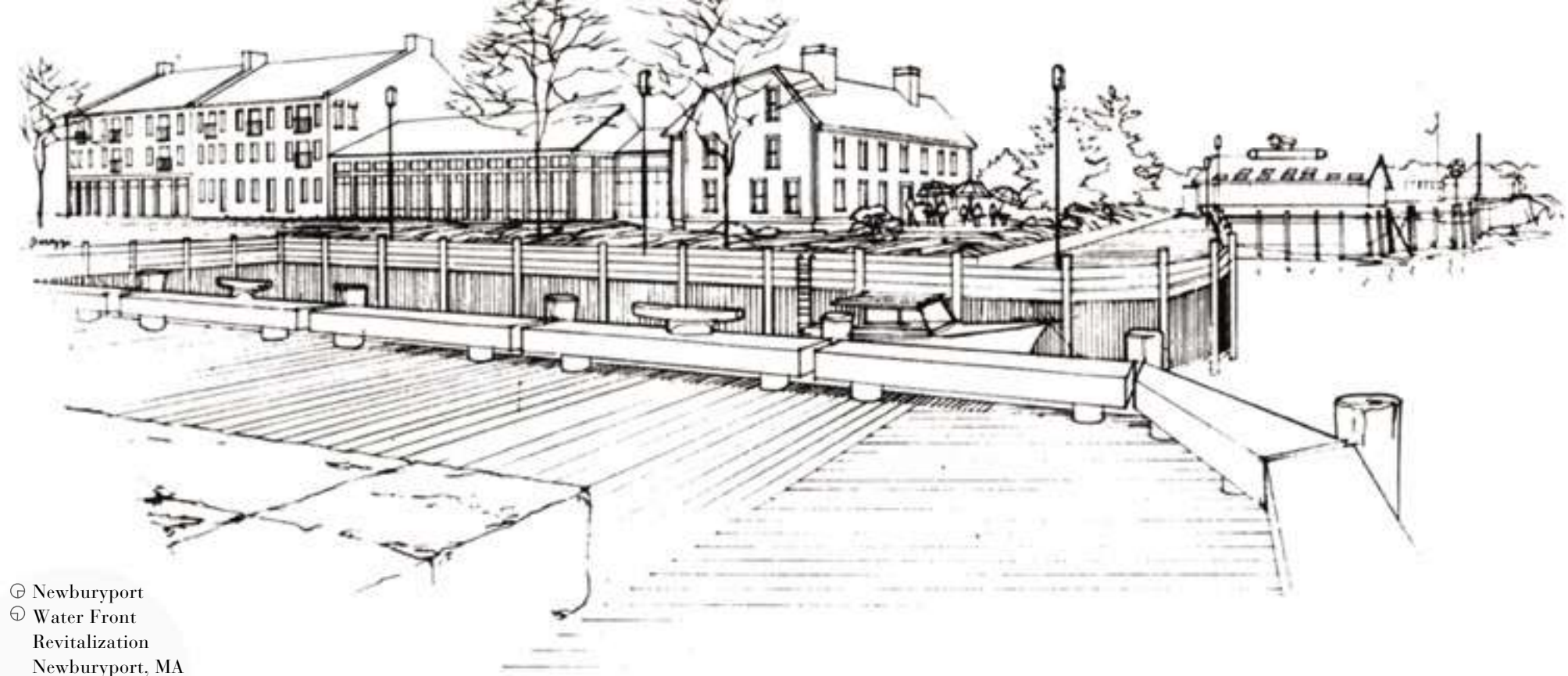




*"[Robert Edson Swain, Inc.] respects and understands the integrity of New Hampshire, its culture and its land. From large office condominiums to single-family homes, the proper integration of form and context produces buildings and landscapes that work in harmony with their environment. Careful manipulation of space, light, and views brings a sense of joy and delight to every design."*

*Swain expertise in project coordination lends clarity to the design from concept through construction. Their experienced management helps to develop a coherent, workable design. Throughout construction, efficiency in time and cost is promoted to streamline the entire project to fit a limited budget."*

*New Hampshire Business Review, June 1983*



⊕ Newburyport  
 ⊕ Water Front Revitalization  
 Newburyport, MA

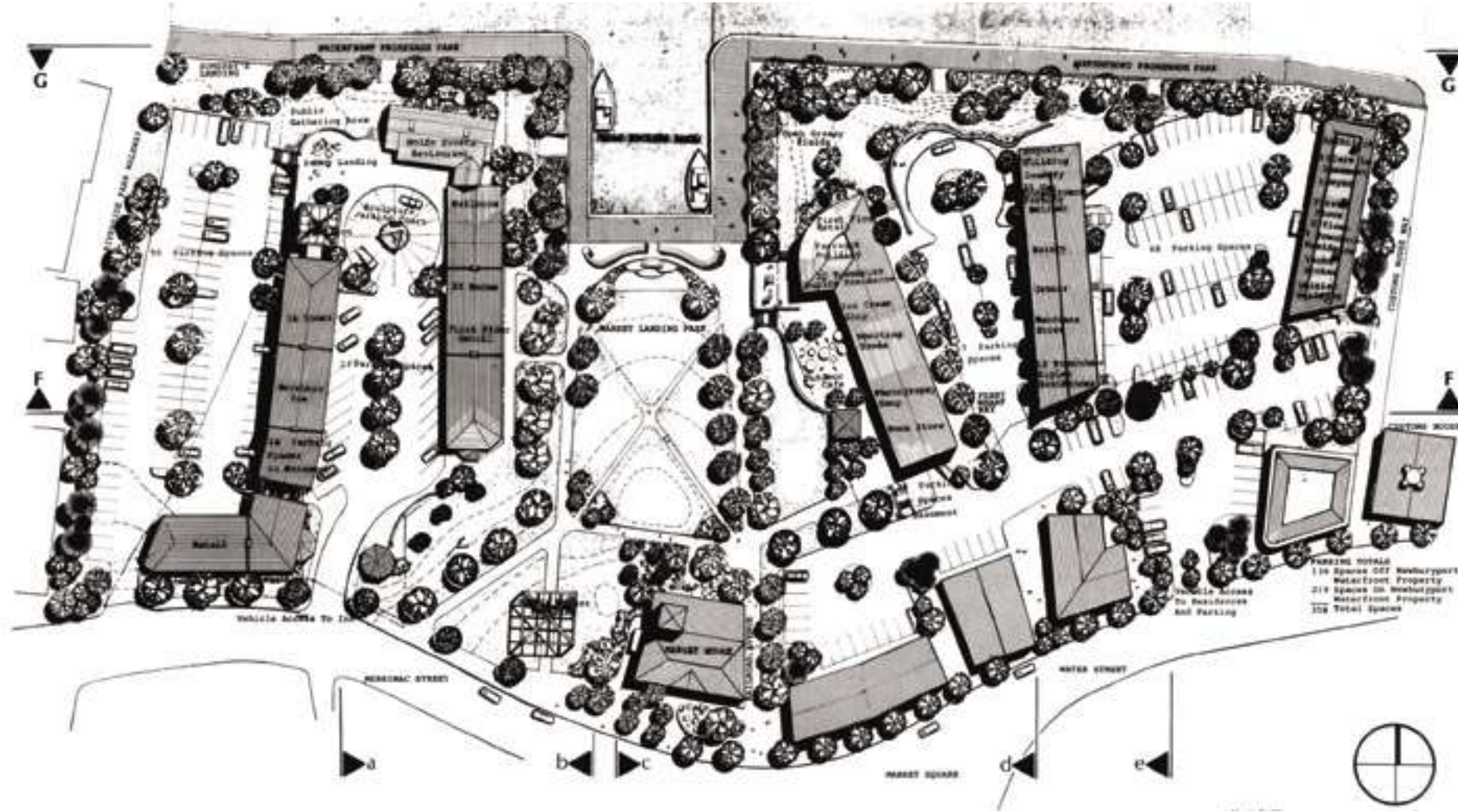


# MIXED - USE

We recognize that the architecture of mixed use development must go beyond conventional attitudes, beyond the purely functional, into a realm of imaging to create mixed use development with enduring impact rather than mere style.

The resulting form must be a response not only to the needs of the community it serves, but also to the subliminal needs and aspirations of the individual user.

Newburyport  
Water Front  
Revitalization  
☉ Newburyport, MA



## RIVERBEND OFFICE PARK

Watertown, Massachusetts

Situated on the banks of the Charles River in Watertown Square, Riverbend Office Park is the careful renovation of a turn-of-the-century brick building to 100,000 square feet of dynamic commercial space. A tempered 3-story atrium “street” organizes circulation within the building, minimizing the need for corridors and maximizing rentable space. Glass elevators, balconies and bridges fill the atrium with a lively quality. Daylight spills through interior glazing into the offices, creating dynamic, light-filled work environments with views to the atrium.





Samoset at Winnepesaukee  
📍 Gilford, New Hampshire



The main estate home is a series of buildings, walls, and landscape elements. The central element includes formal living rooms. Behind the central building two wings complete the house, the east wing is the primary family quarters while the west wing supports the family business. Both structures are designed as elevated Grand Loggias (the primary living space on the upper levels) open along the full length of each wing for maximum sunlight and spectacular views of the Cascade Mountains.

The large north courtyard is reminiscent of an Italian outdoor room. The walls of the courtyard and formal garden hold back the earth and wilderness allowing the watercourse to become the focus of this space. As you move out beyond the house a 1 1/2 mile carefully designed trail leads you through the woods and bridges of the site.

A meandering driveway enters through a mature canopy of cedars and firs, then descends, skirting the edge of a wildlife pond. The drive then climbs through a reforested slope with occasional glimpses of the house beyond.

## DAYSRING FARM

Redmond, Washington







© Skok Systems, LTD.  
Cambridge, MA

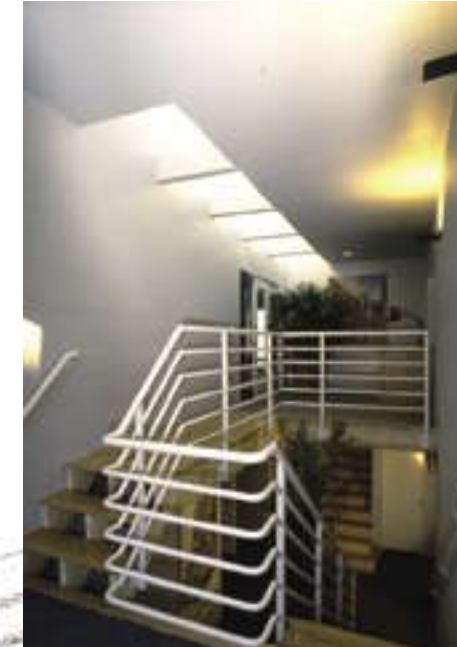
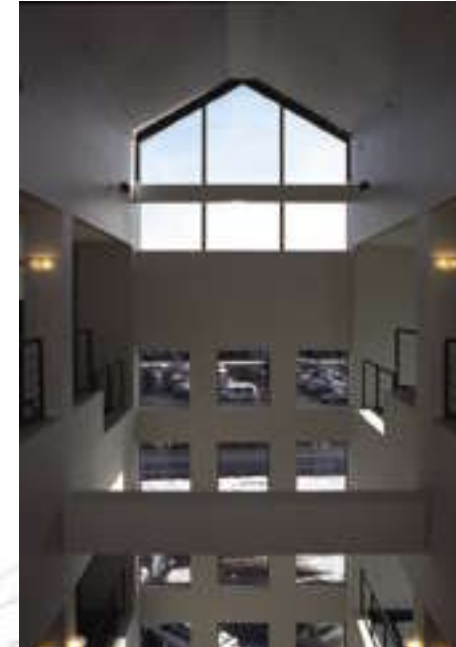
### SKOK SYSTEMS, LTD.

Cambridge, Massachusetts

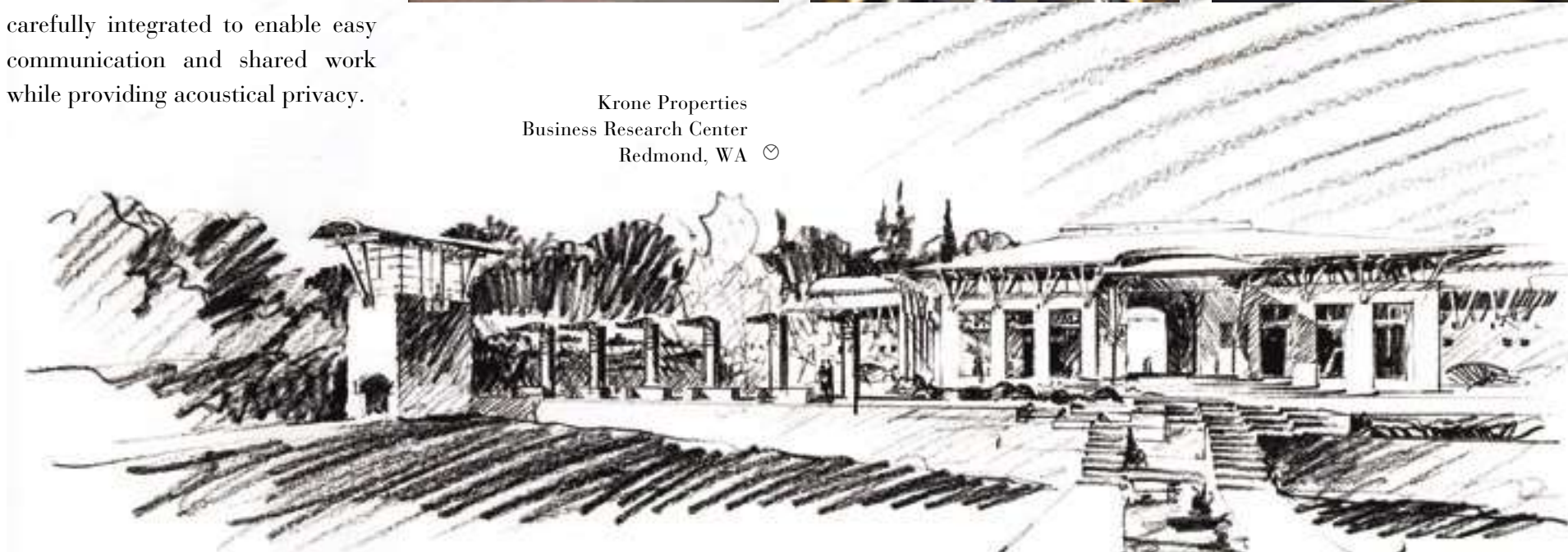
SKOK Systems' headquarters is designed to meet the complex requirements of a designer and producer of Computer Aided Design and Drafting (CADD) systems. The original wood and brick structure and innovative design solutions are artfully blended, defining discreet zones for diverse activities.

© Nature's Northwest  
Portland, OR

A hands-on training room, visible to the visitor, is enclosed by a gracefully curved wall of mahogany trimmed windows, an echo of those in the historic facade. High-ceilings in the sophisticated audio-visual demonstration rooms provide spacious accommodation for exhibiting SKOK's state-of-the-art computer programs. Open plan areas and interior window walls are carefully integrated to enable easy communication and shared work while providing acoustical privacy.



Krone Properties  
Business Research Center  
Redmond, WA ☺





# RECREATION



## Recreation in Mixed-Use Planning

Site: 65 acres of land, including upland and marsh, on the Weir River in Hull, MA. Site Coverage: 15%, land coverage; 85% preserved open space.

Program: Mixed-use development of 270 residential units and 20,000 square feet of commercial space. Residential units include 175 clustered townhouses, 91 units in mixed-use commercial/residential development and the rehabilitation of the Hall Residence to 4 units. Parking and amenities include nature walk, playing fields, canoe dock, and Village Common with park.



McKinnon's Neck Conservation Trust  
200 Acre, 4 miles of coastline  
preservation ☹  
Nova Scotia, Canada ☺







## **WHITEFISH LODGE**

Whitefish, MT

A residential business retreat for an American entrepreneur in Whitefish, Montana. The concept of land preservation and minimal environmental impact guided the program for this project. 60% of the required square footage is completely subterranean. This approach maximizes the available land use. Winter snow conditions provide two meters of insulation to the shallow pitched roofs. These carefully calculated roof slopes, combined with highly reflective metal roofing, reduce summer heat gain through reflectivity. Native plant materials require little or no supplemental irrigation once established.





Samoset at Winnepesaukee  
📍 Gilford, New Hampshire



*“Bob is visionary. He met our goal to integrate design, function, and the environment . . . even when the budget was slashed in half.”*  
– Jon Kimball. North Shore Music Theatre, Beverly, MA

North Shore Music Theatre  
Beverly, MA 📍







# O F F I C E

Buildings and landscapes are enduring commitments, not stylistic whims. Timeless architecture exists in harmony with its environmental and cultural landscape. It is evolutionary, and combines collective knowledge with contemporary technology to create new yet classic forms.

Gallup Medical Center  
 ☉ Gallup, NM



Cambridge Systematics  
 ☉ Cambridge, MA



# GENERAL INVESTMENT AND DEVELOPMENT CO.

Boston, Massachusetts

Planning and architecture for prestigious corporate offices in Boston's Federal Reserve Building. Located on the 20th and 21st floors of the Federal Reserve Building, the innovative design of this corporate headquarters provides an elegant and efficient office environment overlooking Boston and its harbor.

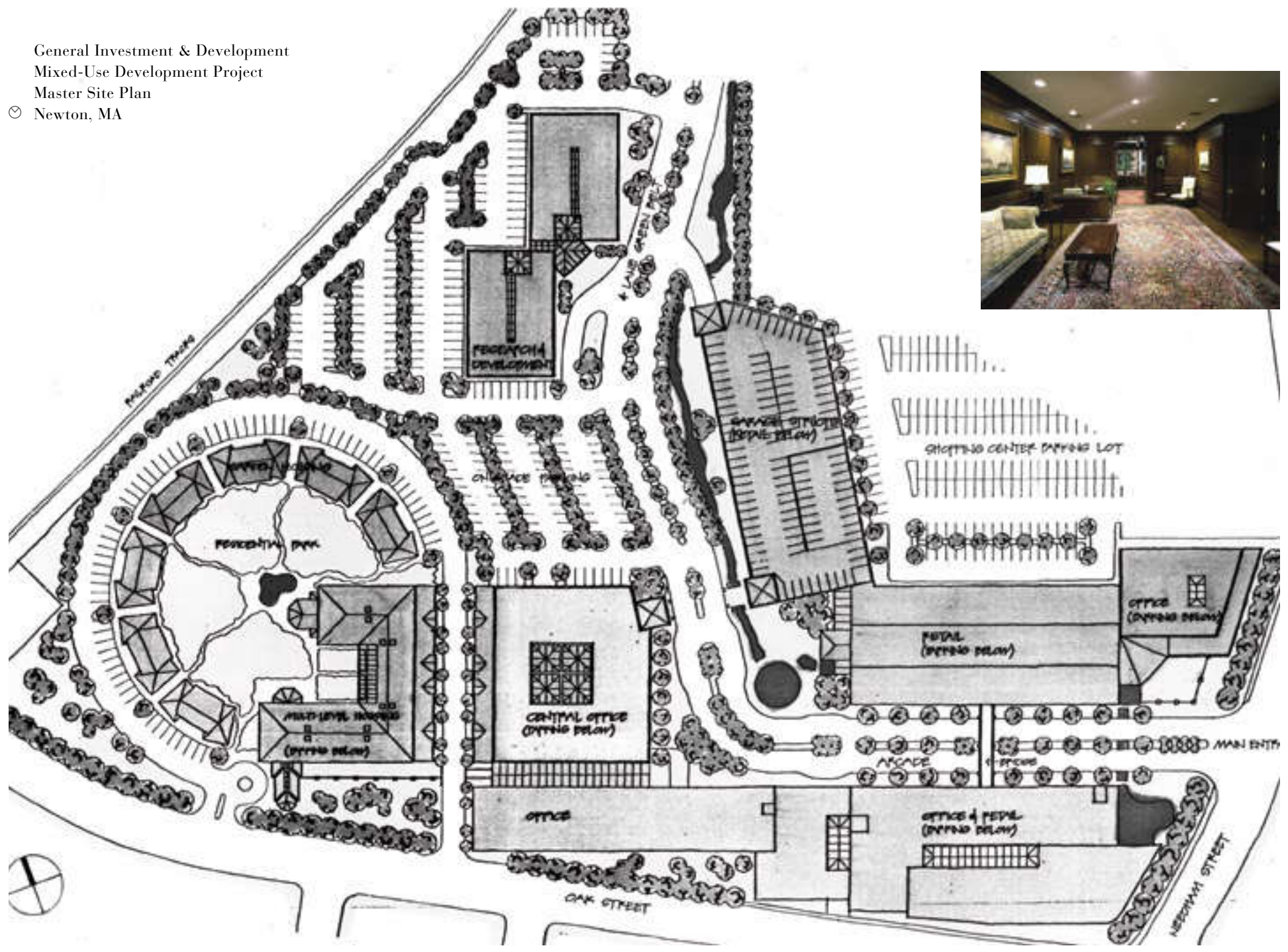
The strong geometric pattern in the space uses the existing building systems as its base. Executive offices in a traditional character wrap the perimeter. Interior glass allows daylight to pass through the perimeter, enlivening the more contemporary interior and allowing natural light in to every workspace.

The geometric pattern creates a series of rooms in the interior core. Circulation, flowing between the perimeter offices and the interior, opens up at points to provide secretarial areas and gathering places. (Winner- Best Office Interior, New England Real Estate Directory, Fall 1984.)

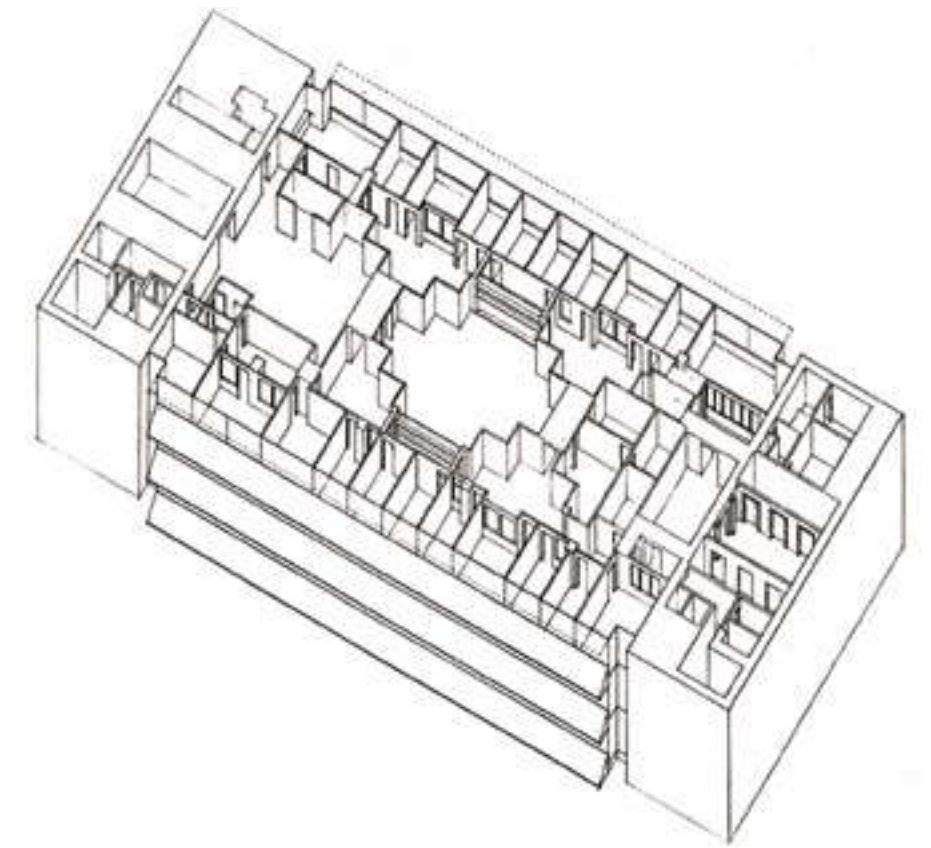




General Investment & Development  
 Mixed-Use Development Project  
 Master Site Plan  
 ☺ Newton, MA



Riverbend Office Park ☺  
 Watertown, MA ☺

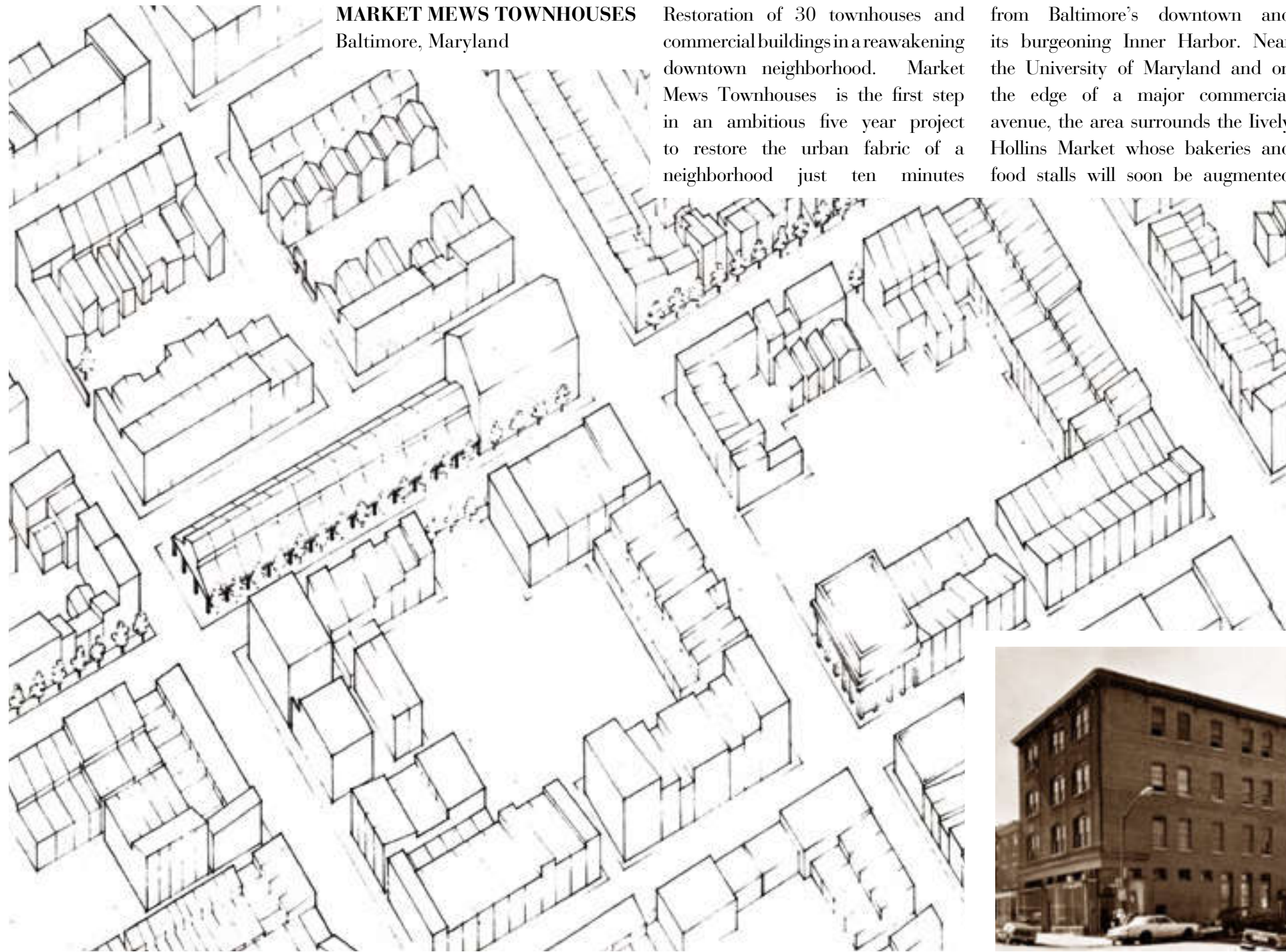




**MARKET MEWS TOWNHOUSES**  
Baltimore, Maryland

Restoration of 30 townhouses and commercial buildings in a reawakening downtown neighborhood. Market Mews Townhouses is the first step in an ambitious five year project to restore the urban fabric of a neighborhood just ten minutes

from Baltimore's downtown and its burgeoning Inner Harbor. Near the University of Maryland and on the edge of a major commercial avenue, the area surrounds the lively Hollins Market whose bakeries and food stalls will soon be augmented



by a performing arts center on the upper story. Regeneration of the neighborhood's life requires creativity in dealing with the range of work from architectural detail to urban design of the ten-block area. The 150 year-old buildings are retrofitted to provide 52

residential units, as well as penthouse offices and storefront commercial space. Contemporary concepts of light and space are used to transform the buildings into distinctive, delightful dwellings, while maintaining their unusual detailing and strong historic

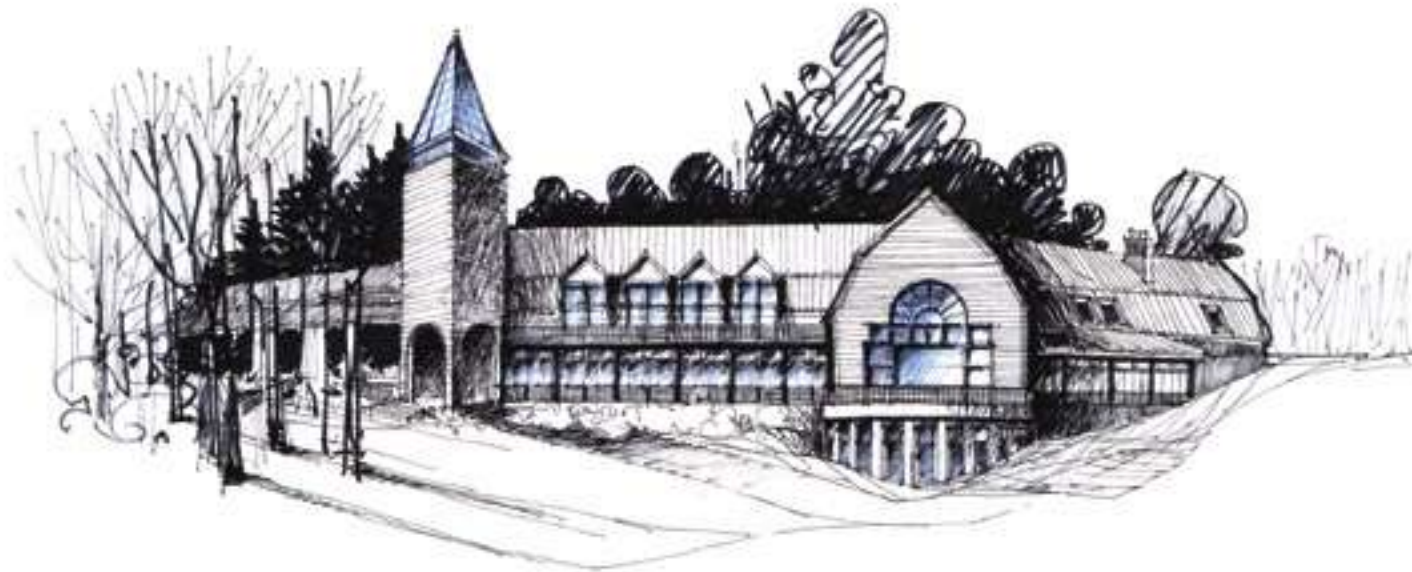
character. Innovative integration of new architectural form with the existing structure has given each unit unique spatial characteristics. Careful balancing of the developers' budget limitations and the concerns of local preservation agencies has

provided urban redevelopment which is economic and sensitive, enhancing the attraction of the neighborhood.





# EDUCATION



**FRANKLIN PIERCE COLLEGE  
CAMPUS CENTER**

Rindge, New Hampshire

The Campus Center is intended to provide a distinct and memorable image for the College, while serving as a center for dining and general campus activities, and as a facility for summer conferences. Situated

on a south-facing slope overlooking beautiful Pearly Lake, the building follows the form of the land and recalls traditional shingle-style buildings in the region through materials and forms. Careful



integration of the building with the landform allows at grade access to all three levels, eliminating the need for expensive elevators and fire stairs. Construction systems are kept simple for local builders. The

building is organized around an interior "street." Like a small town Main Street, it links spaces and concentrates activity. Connecting the east and west ends of the building, and of the campus itself,



the street also connects the Great Hall, metaphorically, the town plaza, a grand interior space for a multitude of functions. The tower, marking the main entry for visitors, is an important new visual symbol

for the College. The Center will provide the College community with a needed focal point, an identity and a dynamic center of activity.

⊙ North Shore Music Theatre  
⊙ Beverly, MA







# R E T A I L

- ⊗ Nature's Northwest
- ⊗ Lake Oswego - Portland, OR



General Nutrition Company  
 - LiveWell ⊗  
 Nationwide, USA ⊗



⊗ The Amphora Company  
 ⊗ West Coast Malls, USA



# HOSPITALITY

## HYANNIS HARBOR VIEW

Hyannis, Massachusetts

Located across from Hyannis Harbor on Cape Cod, MA. This new hotel represents the successful revitalization of a 1950's resort. The new design allows for more efficient use of space and maximizes income potential for the owners. Two glass-enclosed stair towers overlook the harbor and allow year-round use of the hotel. Old elevated walkways have been transformed into a grand deck wrapping the hotel. The deck's shingled walls are punctuated by open balconies with views to the courtyard and Hyannis Harbor.

The building's powerful form is articulated in curved balconies at each end of the courtyard, in a sweeping pipe rail stair, and in a curved wall of weathered shingles at the entrance. Form and materials work with the original building to create an architecture that is familiar to Cape Cod.

The U-shaped building has been transformed to a vibrant courtyard. A free form pool is surrounded by a series of terraced decks and a busy cafe. Trellises covered with flowering vines enclose the pool and decks, providing both required security for the pool and privacy and elegance for the cafe. Carefully landscaped gardens create quiet places for hotel guests.







**GEDNEY FARM, OLD INN ON THE GREEN & GEDNEY SPA**

New Marlborough, MA

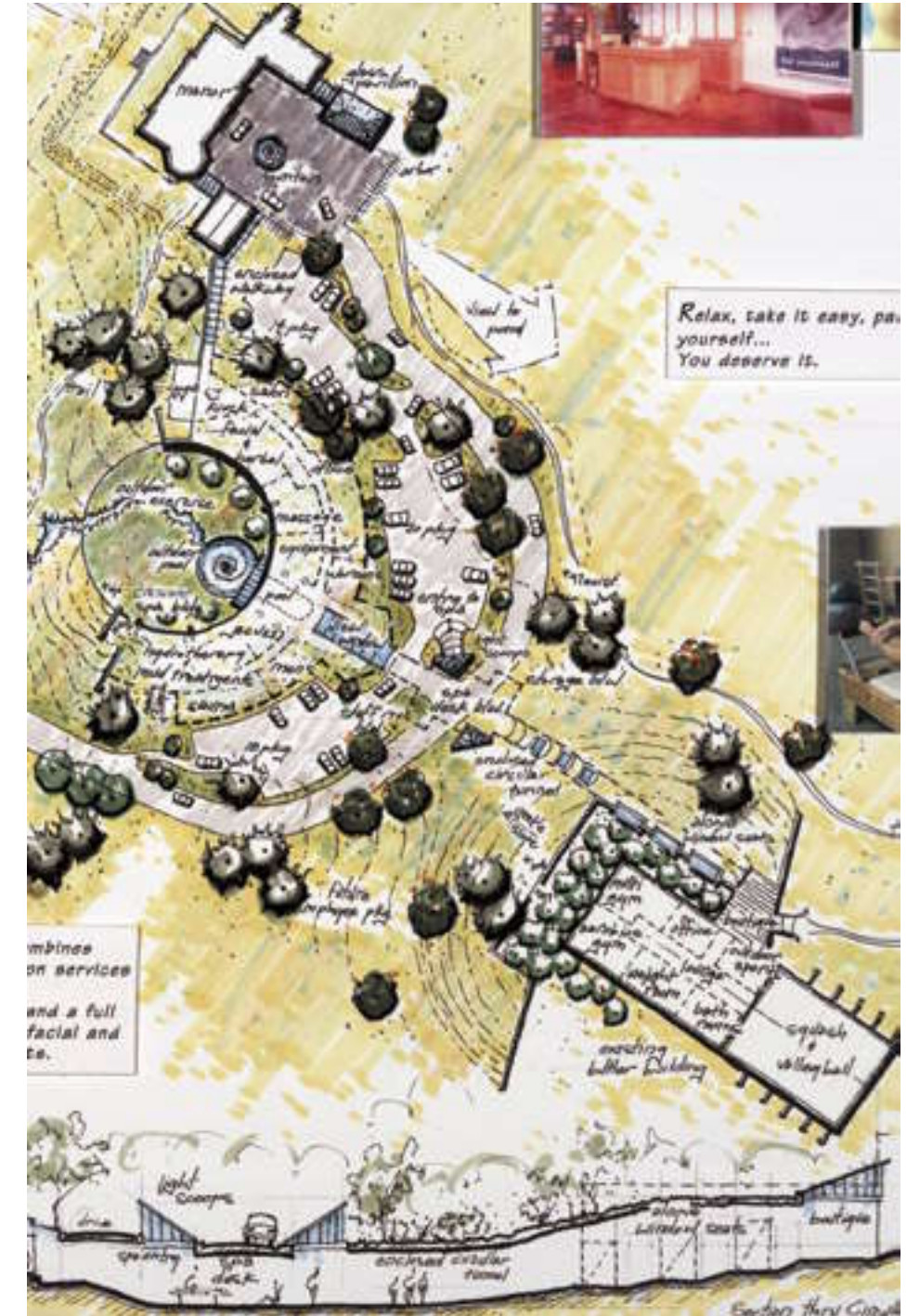
*The Old Inn On The Green and Gedney Farm are surrounded by rolling fields and meadows. The Old Inn, once a stagecoach relay, offers authentically restored guest rooms, fine dining in intimate candle lit dining rooms and seasonal al fresco dining on the canopied garden terrace off the taproom. A few hundred yards away, Gedney Farm consists of two beautifully restored Normandy-style barns housing handsomely appointed guest rooms and suites and uncommon meeting rooms.*



*Today Gedney Farm has been boldly transformed into a unique lodging facility, featuring elegantly appointed guest rooms and suites in the former cattle barn, many with granite fireplaces, some with large tiled whirlpool tubs. Located across a courtyard is the former horse barn, now used as an exceptional space for weddings, special events and executive retreats.*

*In the renovation of Gedney Farm, the architect [Robert Edson Swain, Inc.] aspired to integrate the most distinctive stylistic elements and architectural features of two different eras. As a result, the original architectural features of the barn are strikingly preserved within a contemporary and adventuresome interior space.*

- excerpt from [www.gedneyfarm.com](http://www.gedneyfarm.com)





# H O U S I N G



The Hall Estate  
📍 Hull, MA

## THE HALL ESTATE

Hull, Massachusetts

Integrity in housing means truthful expression through an honest use of structure and materials. Its inspiration is a forthright and practical expression. It is timeless yet modern, has a historical understanding of architecture, and combines collective knowledge with contemporary technology. It does not mean following the latest architectural fashion trends.



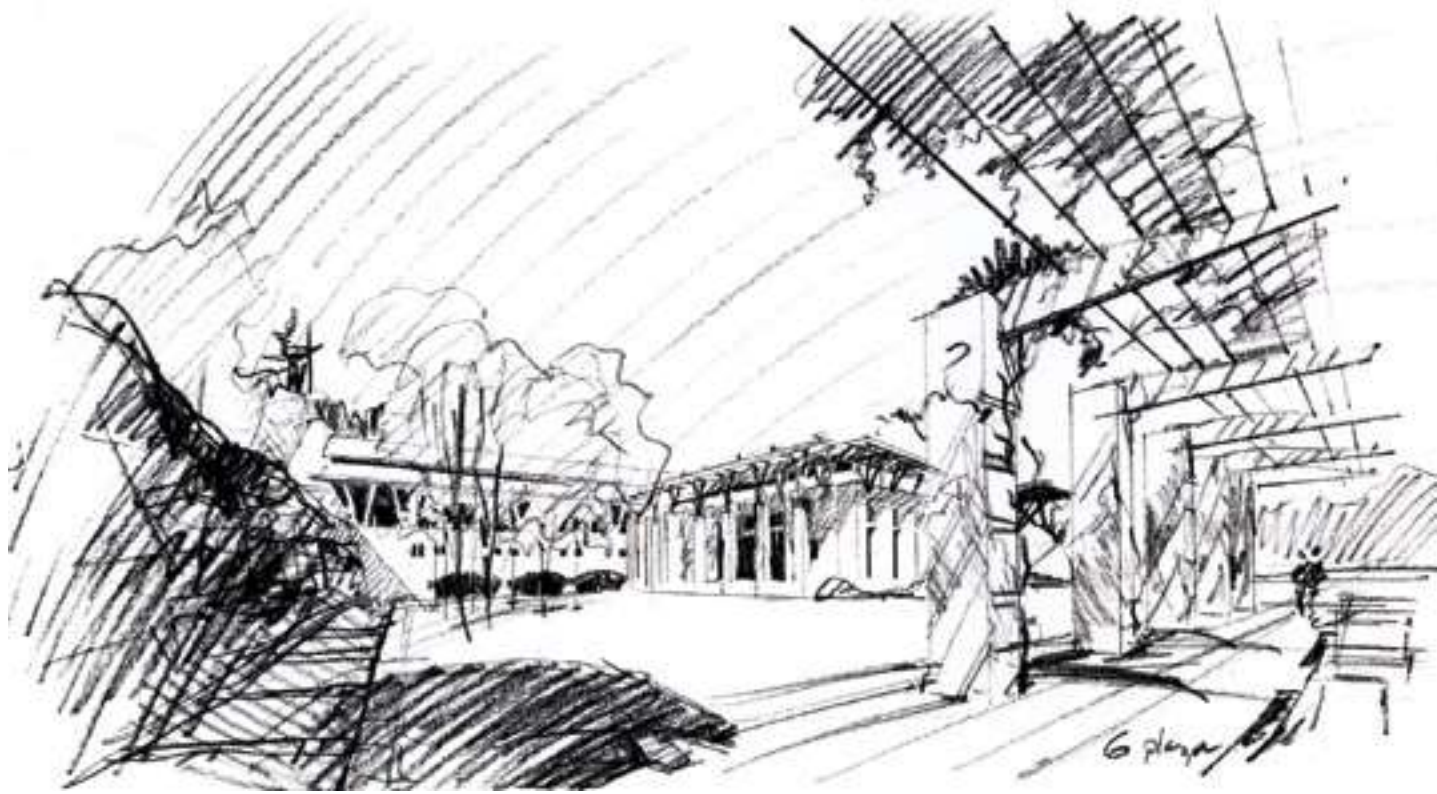
Jones Residence  
📍 Seattle, WA



Condit Residence  
Snoqualmie, WA 📍

Bouley Residence  
South Kent, CT 📍







Phinney Ridge Project  
☉ Seattle, WA



### SAMOSET AT WINNIPESAUKEE

Gilford, New Hampshire

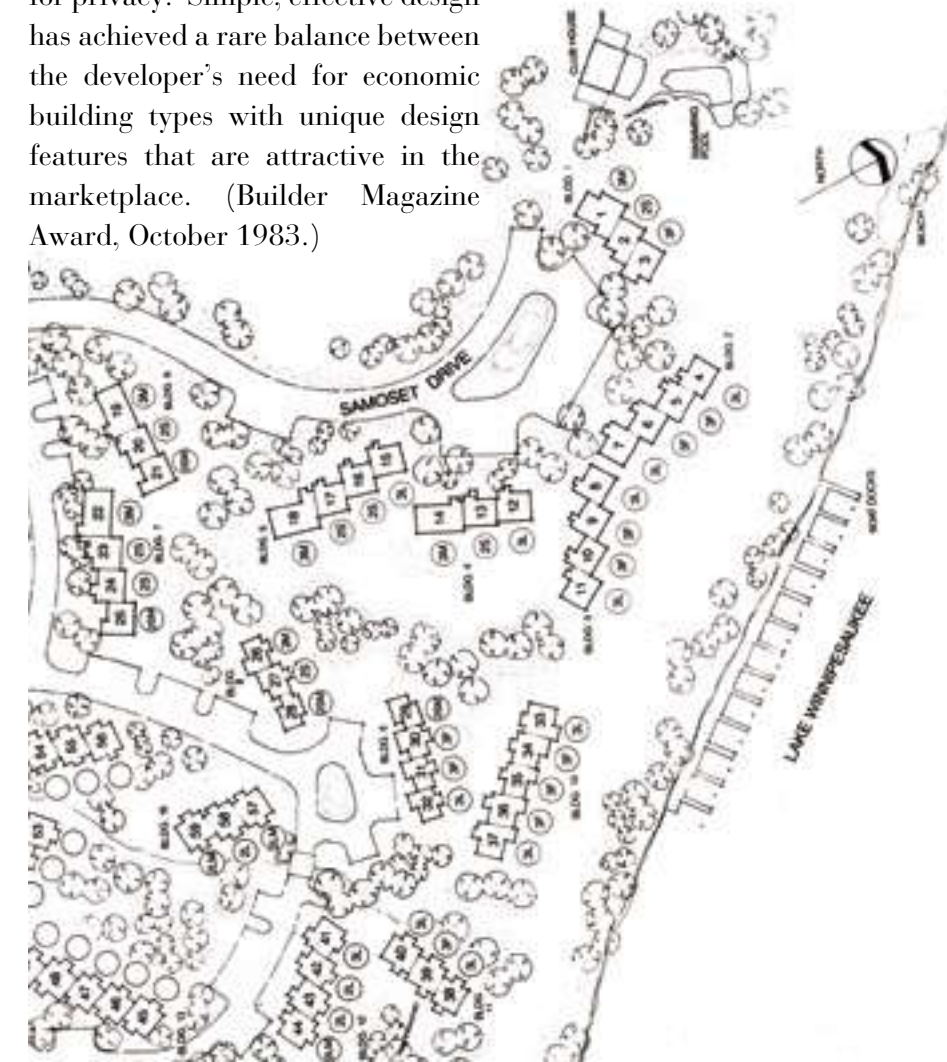
Morgan Residence  
☉ Bainbridge Island, WA



Samoset successfully captures the magic of Lake Winnepesaukee, with lake front housing nestled at the forest edge. The design of Samoset clearly protects and responds to the quality of the natural environment. Units are clustered in groups of 3 to 5, relating to the rural setting and minimizing their impact on the land. The building clusters are carefully sited to take maximum advantage of the impressive view and to avoid unnecessary site work. Strategically located windows, screened porches



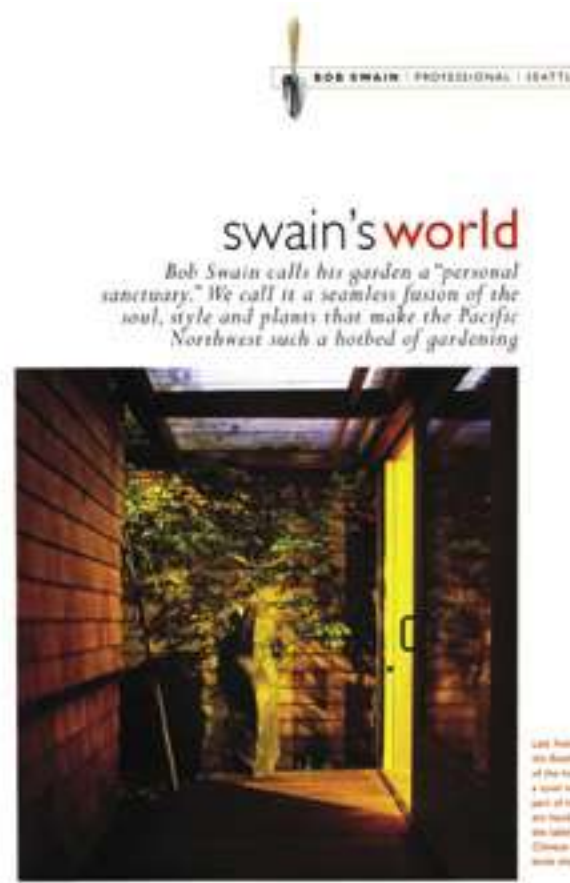
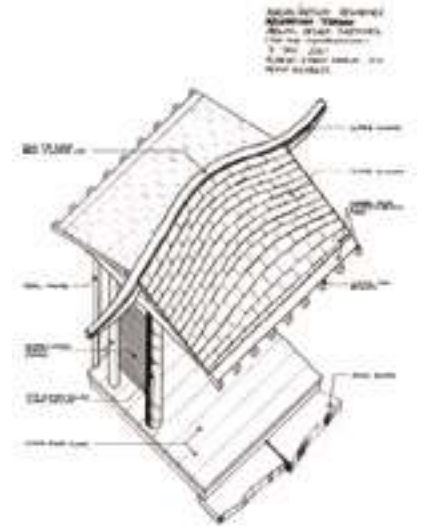
and decks open up the units to their lovely setting and create a light, spacious feeling. The openness of the units is carefully balanced with bedrooms and family rooms tucked away from the central activity core for privacy. Simple, effective design has achieved a rare balance between the developer's need for economic building types with unique design features that are attractive in the marketplace. (Builder Magazine Award, October 1983.)





MacIntosh Residence Fireplace  
 ☉ Redmond, WA

Phinney Project  
 ☉ Seattle, WA







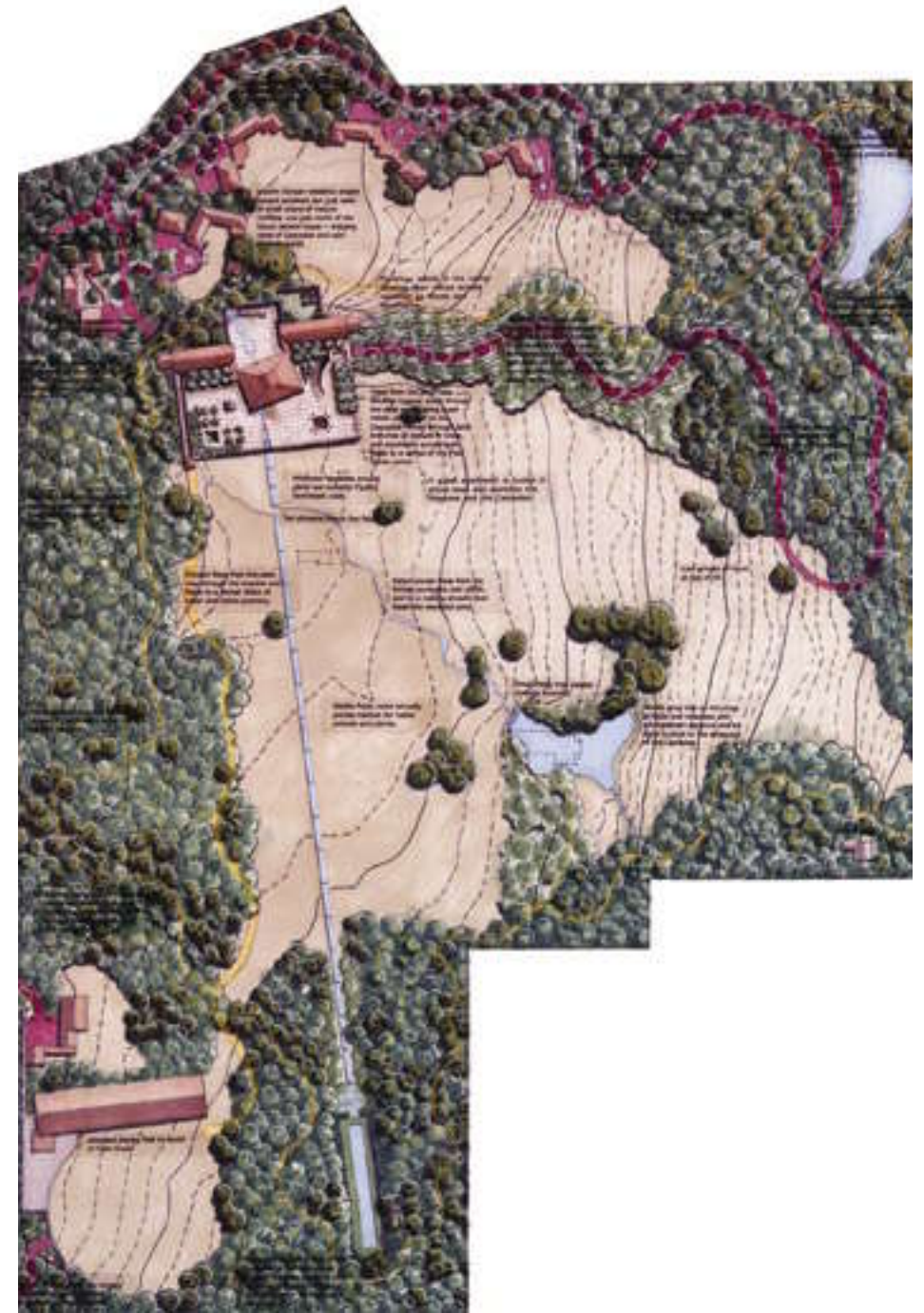
**JAKUC RESIDENCE**  
Boston, Massachusetts

A contemporary luxury condominium in an historic South End rowhouse. The four-level Jakuc residence is one of three luxury condominiums within a Victorian-era, bow-front shell. It is organized around a meandering path, which connects a series of landings and levels, emerging finally at a roof deck overlooking the city. In keeping with the traditional rhythm of urban townhouses, major spaces are symmetrically organized on a formal axis generated by the bow in front, with parallel "service" spaces. The path traverses cross axially, celebrating movement with varying vistas and destinations. Multi-level spaces, windows and skylights help to create an elegant living environment with generous natural light, dynamic spaces and exciting forms.



Dayspring Farm ☺  
Redmond, WA

Samoset at Winnepesaukee  
Gilford, New Hampshire ☺







⊙ Condit Residence  
Snoqualmie, WA



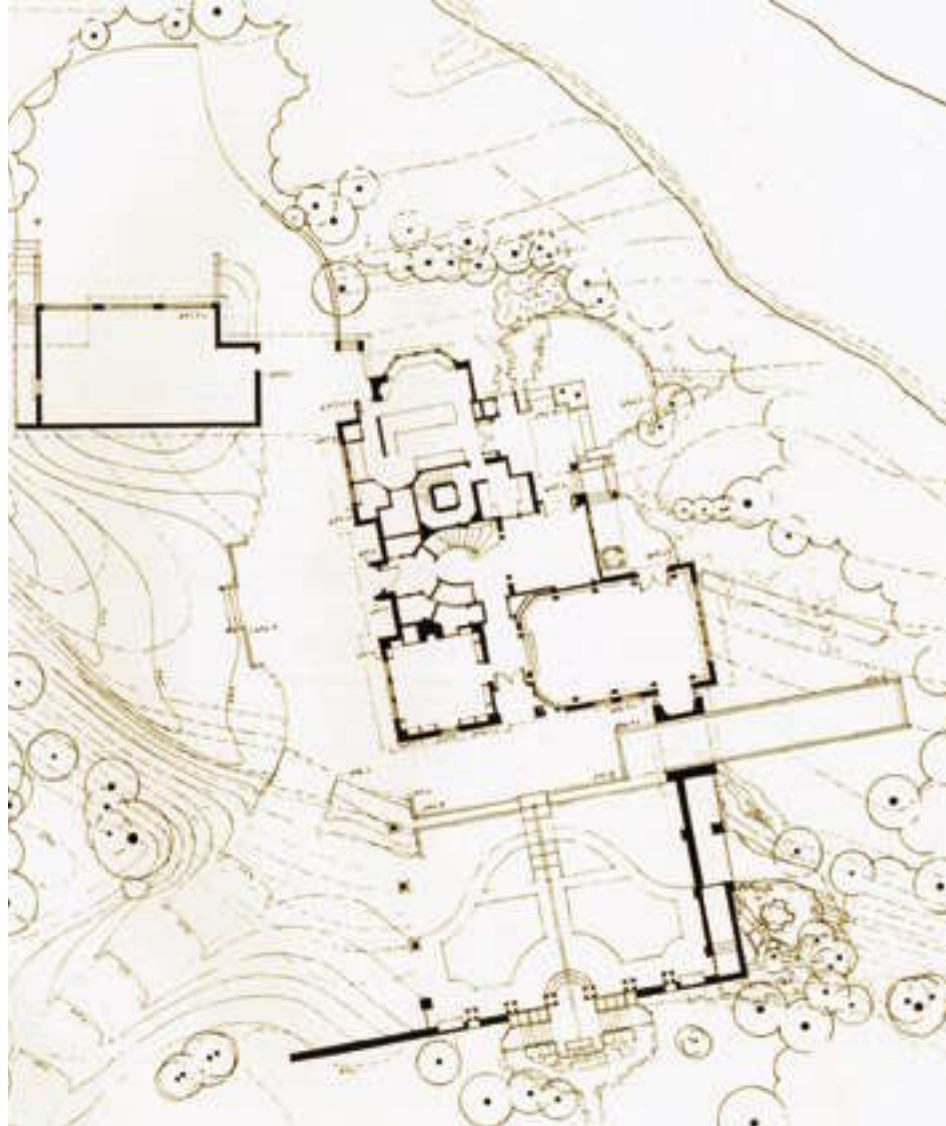
User Routes - Flow Analysis ⊙

Phinney Ridge Project ⊙  
Seattle, WA





Condit Residence  
Snoqualmie, WA



*"We can't imagine an architect more skilled in all phases of design and construction, nor one who brings more joy to the process. Our recommendation of Bob Swain is absolute and unqualified. No one in the country could have done a better job."*  
– Phil Condit, CEO, the Boeing Company, Chicago, IL



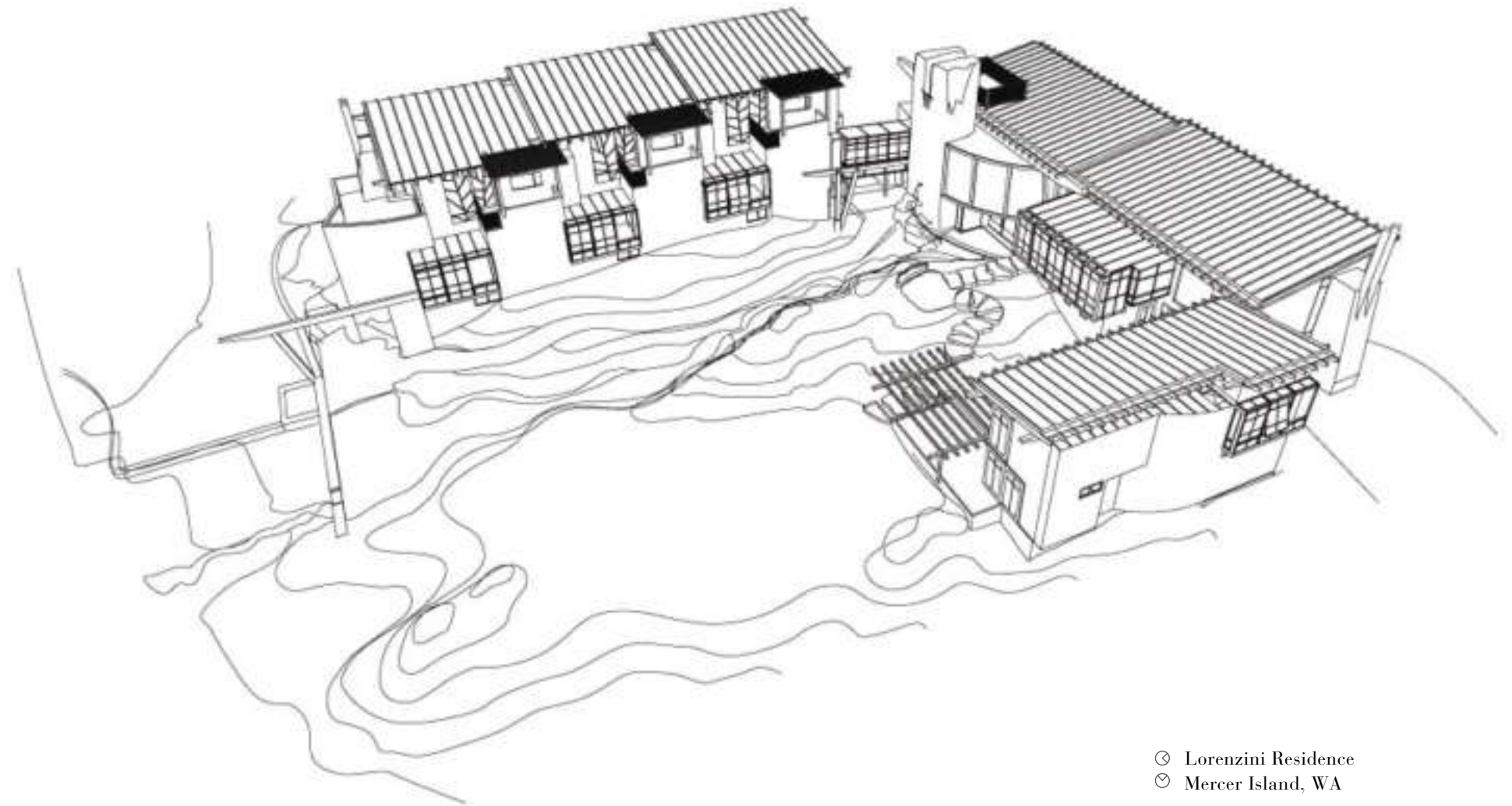




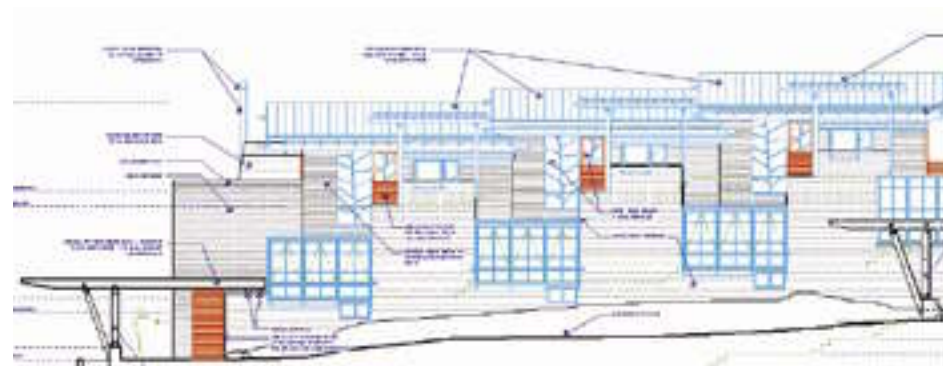
⊙ Kaiser Landscape  
Bellingham, WA

### Receptivity

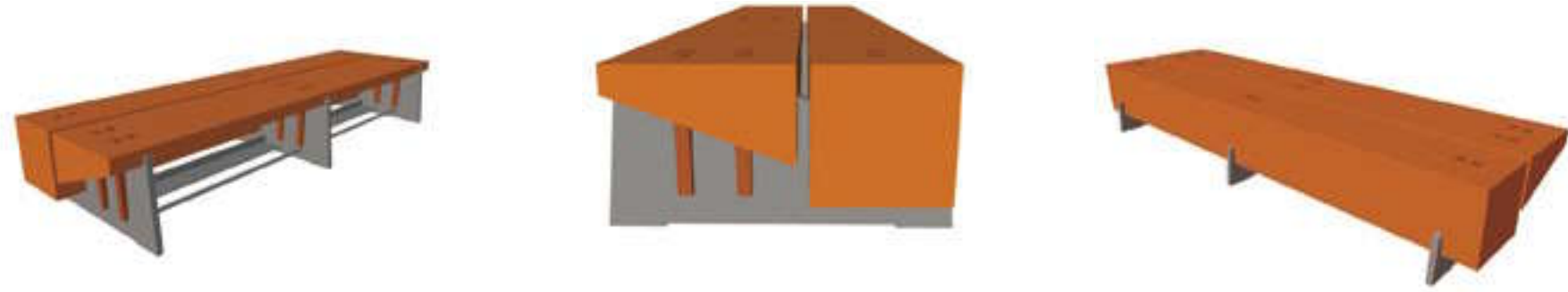
Clear communication is the basis of successful design. I have an exceptional ability to focus, to look and listen, and to absorb without preconception what a given setting and a particular client have to tell me. My natural energy brings joy to the process of design, engages the client in the excitement, inspires the design team, and sustains the positive experience to project completion.



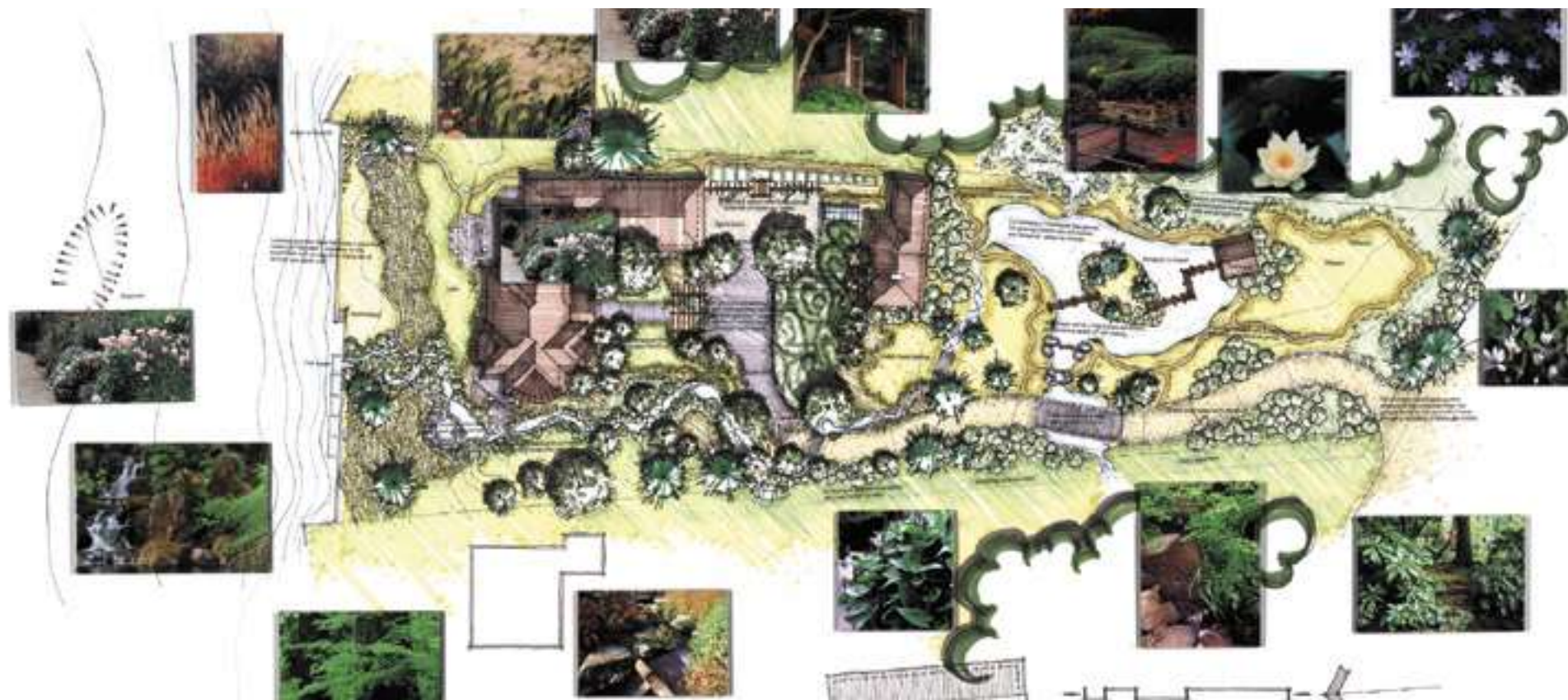
⊙ Lorenzini Residence  
⊙ Mercer Island, WA







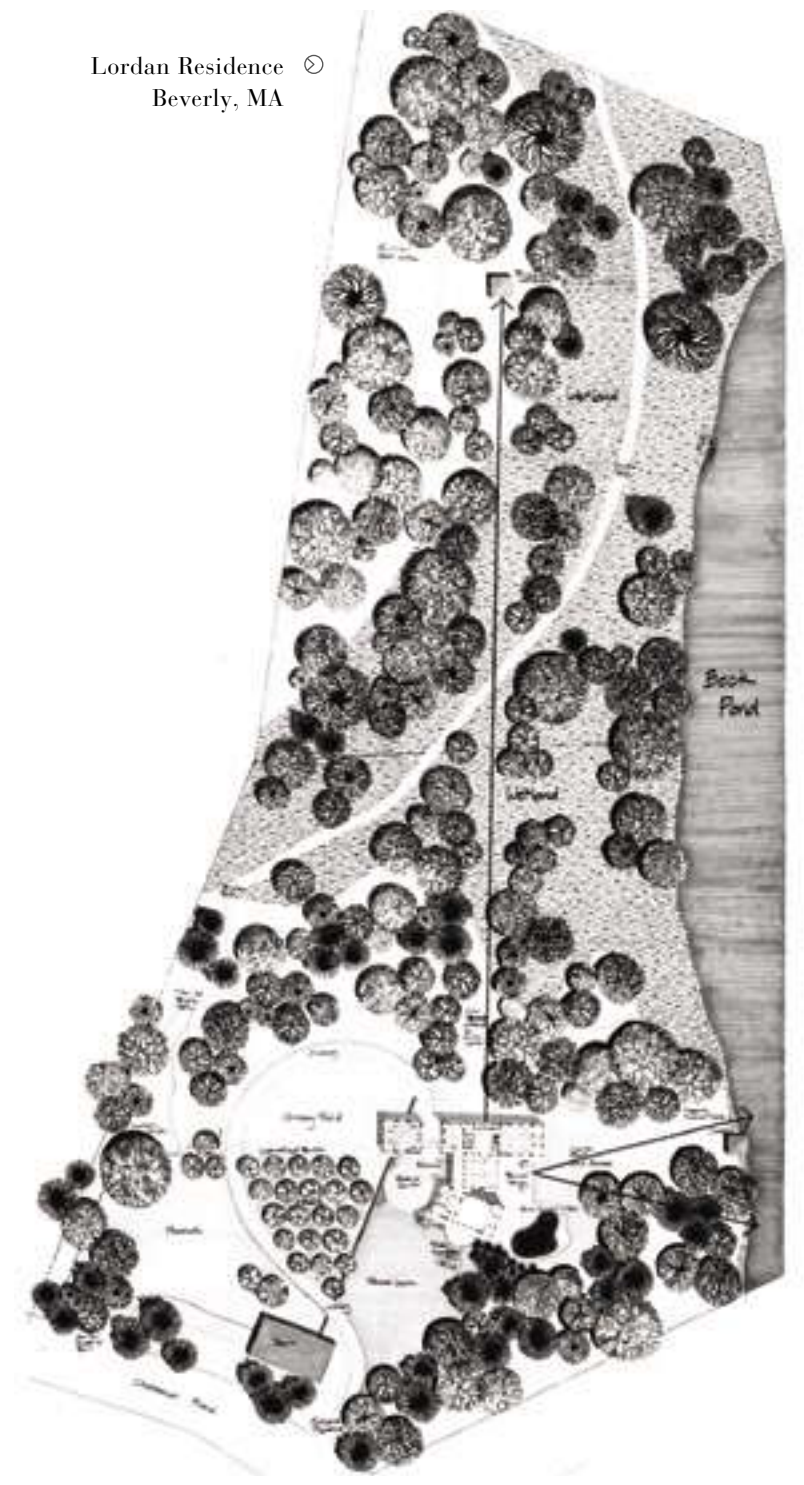
Morgan Bench Details  
 ☉ Bainbridge Island, WA



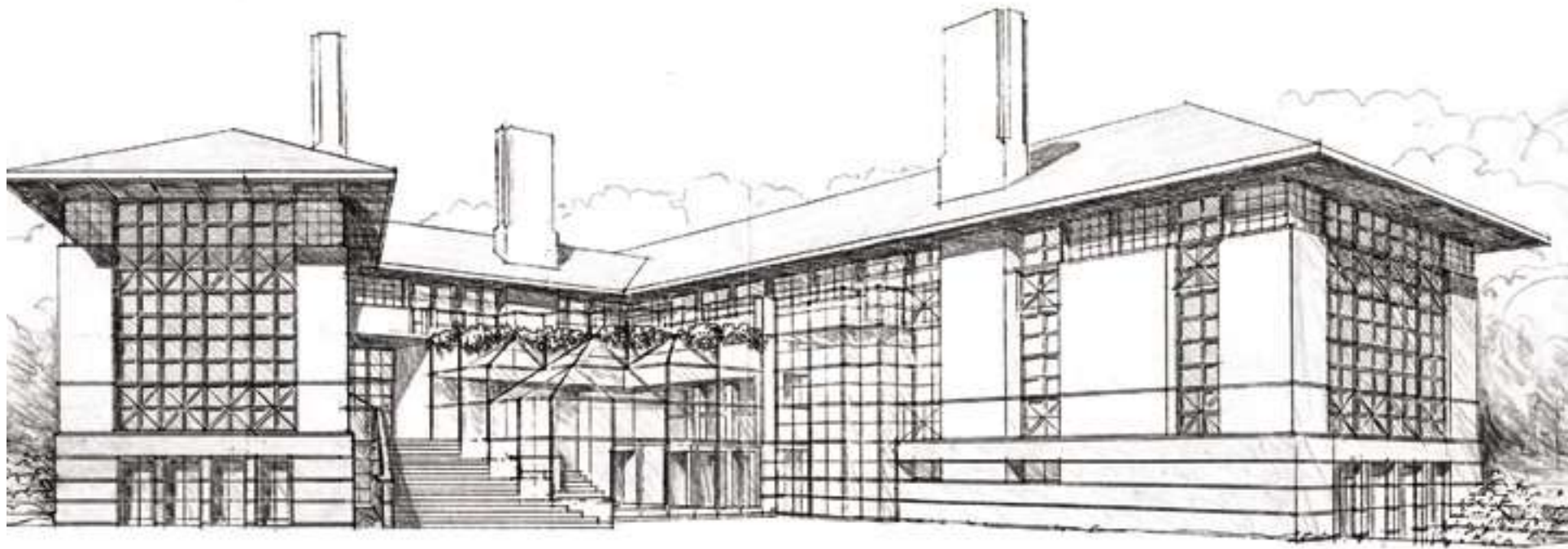
Morgan Landscape  
 ☉ Bainbridge Island, WA



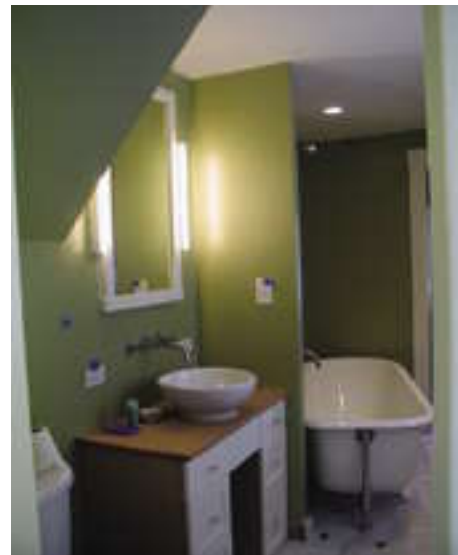
Lordan Residence ☉  
 Beverly, MA







- ⊙ Flores Residence  
Bellevue, WA
- ⊙ Lordan Residence  
Beverly, MA







ROBERT  
EDSON  
SWAIN  
A I A

**TAC**

**D** *esign For Place*

in association with the Architects Collaborative – Cambridge, MA





**PROJECTS IN ASSOCIATION WITH  
THE ARCHITECTS COLLABORATIVE (TAC)**

Shawmut National Bank ☉  
40 Story Office Building  
Boston , MA

Montego Bay Hospital  
400 Bed Hospital,  
☉ 1,200 Staff Housing Units  
☉ Jaimaca, W.I.



Capitol Center  
Downtown  
Tallahassee, Florida ☉



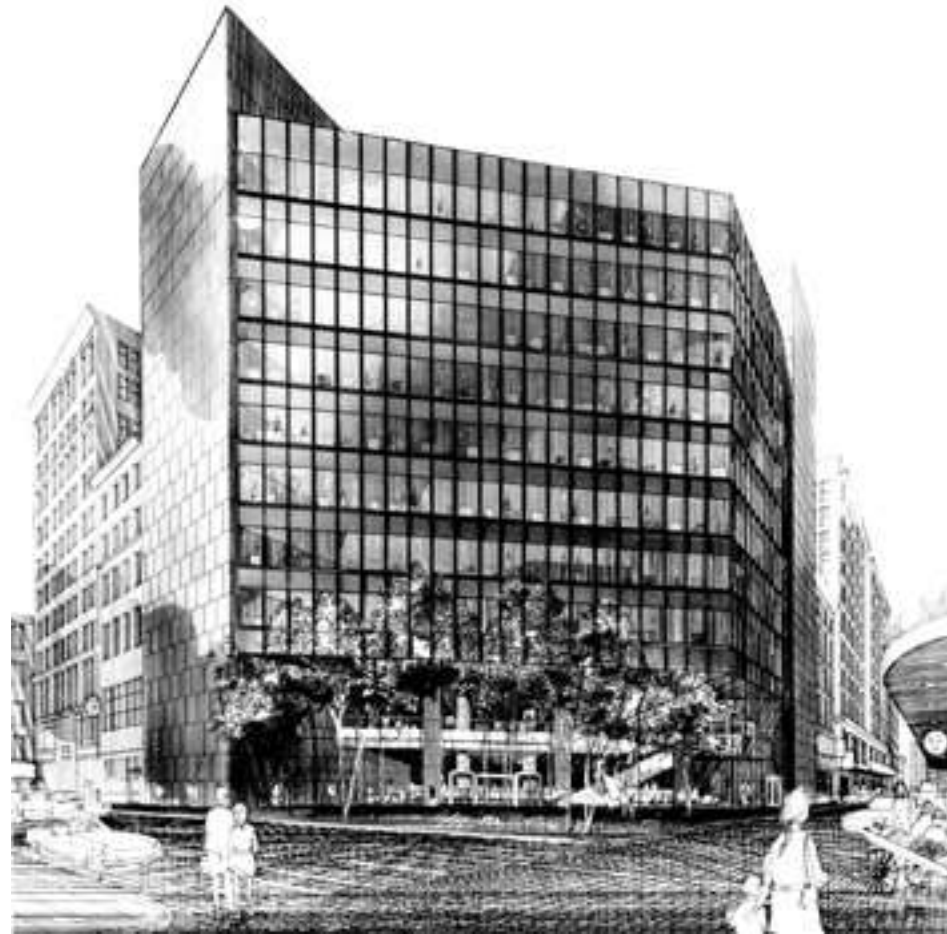




Quincy School ☉  
Boston, MA



Charlestown Savings Bank  
☉ 10 Story Office Building & Garden  
☉ Boston, MA



☉ Southeastern Illinois University  
Edwardsville, IL

Quincy School  
☉ Boston, MA



Capitol Center  
Downtown  
Tallahassee, Florida ☉





<b>Commercial: Master/Site Planning</b>	<b>Commercial: Hotels/Inns/Resorts</b>	<b>Commercial: Retail</b>	<b>Commercial: Retail (continued)</b>	<b>Commercial: Office</b>	<b>Commercial: Architectural Interiors/Space Planning</b>	<b>Commercial: Architectural Interiors/Space Planning (continued)</b>	<b>Commercial: Architectural Interiors/Space Planning (continued)</b>
Nature's Northwest Flagship Store 1998—Lake Oswego, OR	Athens Gateway Hotel 2007—Athens, Greece	Athens Gateway Branch Bank 2007—Athens, Greece	Harborview Restaurant 1987—Hyannis, MA	North Shore Arts Foundation 1989(D)—Beverly, MA	Virtuoso International 2002—Seattle, WA	Business Research Corporation Expansion 1987—Boston, MA	Boston Wharf Company 1985(D)—Boston, MA
Nature's Northwest Fremont Store 1999—Portland, OR	Gedney Spa 2003—New Marlborough, MA	David Bouley Restaurant 2003—New York, NY	Kerdos Building 1987—Boston, MA	Riverbend Office Park, Phase II 1989(D)—Watertown, MA	Boeing Business Jets Aircraft Interiors 2000—Seattle, WA	Carpenter Company 1987—Boston, MA	Cambridge Systematics 1985—Cambridge, MA
North Shore Music Theatre 1989—Beverly, MA	Old Inn on the Green Thayer House 2000—New Marlborough, MA	General Nutrition Co. 5800 Store Reset 2003—Pittsburgh, PA	MIT Microcomputer Center 1987—Cambridge, MA	Schneider Associates 1989—Brookline, MA	Allied Percival International 1999—Seattle, WA	General Investment and Development Company, Headquarters Expansion 1987—Boston, MA	Resource Management 1985(D)—Cambridge, MA
Newton Mixed-Use Project, General Investment & Development Co. 1989(D)—Newton, MA	Old Inn on the Green Stebbins House 2000—New Marlborough, MA	General Nutrition Co. Concept Development 2001—Pittsburgh, PA	NorthEastern Mortgage Company, Branch Office 1987—Boston, MA	Nizhoni Medical Center 1988—Callup, NM	Allied Percival International 1994—Seattle, WA	New England Research 1987—Watertown, MA	Rindge Hall, Franklin Pierce College 1985(D)—Rindge, NH
Hall Estate, Village Center 1989—Hull, MA	Old Inn on the Green, Kitchen/Room Improvements 2000—New Marlborough, MA	Natures Northwest Fremont Store 1999—Portland, OR	1045 Hollins Street 1986—Baltimore, MD	NorthEastern Mortgage Company, Headquarters 1987—Cambridge, MA	Allied Percival International 1993—Seattle, WA	NorthEastern Mortgage Company Offices 1987—Cambridge, MA	Semper Enterprises 1985—Osterville, MA
Emily Flint Campus Center, Franklin Pierce College 1988—Rindge, NH	Old Inn on the Green, Taylor Residence 1999—New Marlborough, MA	Natures Northwest Gresham Store 1999(D)—Portland, OR	1047 Hollins Street 1986—Baltimore, MD	Dwyer Square 1987—Cambridge, MA	Executive Jet Aviation 1990(D)—Islip, NY	Pathfinder Fund 1987—Watertown, MA	SKOK Systems, Ltd. 1985—Cambridge, MA
Drislane Development 1988(D)—Lynn, MA	YMCA Cambridge Hotel, The Beacon Companies 1989(D)—Cambridge, MA	Natures Northwest Concept Development 1998—Lake Oswego, OR	Market Mews Townhouses 1100 Hollins Street 1986—Baltimore, MD	Channing House, Arlington Street Church 1986—Boston, MA	Rainaldi Dental Office 1989—Callup, NM	Primericus 1987—Watertown, MA	SKOK Systems, Ltd. 1985—New York, NY
Hyannis Harborview Hotel 1987—Hyannis, MA	Gedney Farm, Lodging Barn 1989—New Marlborough, MA	General Nutrition Co. 50 Store rollout 1998—Pittsburgh, PA	51 Arlington Street 1986—Baltimore, MD	Channing House, Arlington Street Church 1986—Boston, MA	Nizhoni Medical Tenants 1989—Callup, NM	Swain Associates, Inc. 1987—Cambridge, MA	Watzman & Keyes 1985—Cambridge, MA
NorthEastern Mortgage Company, Headquarters 1987—Cambridge, MA	Holly Tree Hotel 1989—Hyannis, MA	General Nutrition Co. Live Well Concept 1997—Pittsburgh, PA	Classic Revivals 1985—Boston, MA	Channing House, Arlington Street Church 1986—Boston, MA	MIT Microcomputer Center 1989—Cambridge, MA	The Lordan Companies 1987—Burlington, MA	Bay Colony Properties 1984(D)—Boston, MA
Newburyport, Waterfront Development 1986(D)—Newburyport, MA	Hyannis Harborview Hotel 1987—Hyannis, MA	Amphora 10 Store rollout 1997—Seattle, WA	Cantin Abruzzi 1978—Newton Highlands, MA	Market Mews Townhouses, 1100 Hollins Street 1986—Baltimore, MD	MIT Microcomputer Center 1989—Cambridge, MA	Business Research Corp. 1986—Boston, MA	General Investment and Development Company, Headquarters 1984—Boston, MA
Riverbend Office Park 1986—Watertown, MA	Willow Creek 1987(D)—New Marlborough, MA	Amphora 1994—Seattle, WA	Newton Highlands Center 1978(D)—Newton Highland, MA	Riverbend Office Park 1986—Watertown, MA	Shapira Real Estate 1988(D)—Boston, MA	Riverbend Office Park Atrium 1986—Watertown, MA	Groff-Rosenzweig 1984—Cambridge, MA
	Newburyport, Waterfront Development 1986(D)—Newburyport, MA	Frameworks 1990—Burlington, MA		Kerdos Building 1986—Boston, MA	Advan*Cer 1988—Watertown, MA	Technical Data Corporation 1986—Boston, MA	Marketplace Center 1984—Boston, MA
	Steele Hill West Resort 1983—Sanbornton, NH	Putnam Hall Shops 1990(D)—Orange, MA		MGM Building 1985(D)—Boston, MA	American Management Millwork 1988—Watertown, MA	Windsor Management 1986—Marlborough, MA	Muscular Therapy 1984—Cambridge, MA
		London Harness 1989—Wellesley, MA		Harsch Realty 1983—Williamstown, MA	Autossplice, Inc. 1988—Cambridge, MA	Windsor Management 1986—Norwood, MA	Repligen 1984—Cambridge, MA
				Village West 1983—Laconia, NH	Emily Flint Campus Center, Franklin Pierce College 1988—Rindge, NH	Windsor Management 1986—Waltham, MA	SKOK Systems, Ltd., Riverside Place 1984(D)—Cambridge, MA
				Rogal Associates 1980—Newton, MA	New England Research, Expansion 1988—Watertown, MA	Work-Family Directions 1986—Watertown, MA	Computer Consoles, Inc. 1983—Cambridge, MA
				Ellis and Andrews 1979—Cambridge, MA	Stonehand, Inc. 1988—Cambridge, MA		Rogal Associates 1980—Newton, MA
				Newton Highlands Center 1978(D)—Newton Highland, MA			Eugene O'Neil Theater Green Room & Ticket Ctr. 1975—Provincetown, MA

(D) *Design services only  
Project not built to date*



**Commercial:  
Landscape Design**

Nature's Northwest  
Flagship Store  
1998—Lake Oswego, OR

Nature's Northwest  
Freemont Store  
1999—Portland, OR

Nature's Northwest  
Gresham Store  
1999(D)—Portland, OR

Riverbend Riverwalk  
1992—Watertown, MA

Warwick City Park  
1990—Warwick, RI

Hall Estate  
Pool House Gardens  
1989—Hull, MA

Windsor Gardens  
1989—Waltham, MA

Windsor Gardens  
1989—Norwood, MA

Windsor Gardens  
1989—Marborough, MA

Emerson Aviation  
1989(D)—Laconia, NH

Emily Flint  
Campus Center,  
Franklin Pierce College  
1988—Rindge, NH

Hyannis Harborview  
1987—Hyannis, MA

**Commercial:  
Landscape Design (continued)**

NorthEastern Mortgage  
Company Headquarters  
1987—Cambridge, MA

New England Life  
Parking Garage  
1986(D)—Boston, MA

Riverbend Office Park  
1986—Watertown, MA

West Tisbury Streetscape  
1986(D)—Martha's Vineyard, MA

Cedardale Fitness Center  
1985(D)—Haverhill, MA

Village Bank  
1983—Gilford, NH

Village West  
1983—Gilford, NH

**Industrial**

Aircraft Intelligence  
Aircraft Interior Components  
2002—Seattle, WA/Naples, Italy

Boeing Business Jets  
Project SOPHIA  
Aircraft Interior Innovations  
2001—Seattle, WA/Naples, Italy

Boeing Business Jets  
Custom Interior for 737-700  
2001—Basil, Switzerland/Seattle, WA

Boeing Business Jets  
Project Skyhome  
2000(D)—Seattle, WA

Boeing Business Jets  
BBJ2 First Class  
2000(D)—Seattle, WA

The Boeing Company  
Corporate Headquarters  
1999—Seattle, WA

Butler Aviation,  
Airport Service Center  
1991—Boston, MA

Executive Jet Aviation,  
Maintenance Facilities  
1990—Westfield, MA

Emerson Aviation Hanger  
1989—Laconia, NH

North Shore  
Music Theatre,  
Production Facility  
1989—Beverly, MA

Emerson Aviation,  
Airport Service Center  
1988(D)—Laconia, NH

Jet Aviation USA,  
Airport Service Center  
1988—Bedford, MA

Edwards Boat Yard  
1981—Falmouth, MA

**Institutional**

Athens Gateway  
University of Athens  
Entrepreneur Center  
2007—Athens, Greece

United Methodist Church  
1990—Barrington, RI

YMCA Cambridge,  
The Beacon Companies  
1989(D)—Cambridge, MA

Hospice on Mission Hill  
1989—Boston, MA

North Shore Music Theatre  
1989—Beverly, MA

Massachusetts  
Correctional Facilities,  
Morse Diesel, Inc.  
1989(D)—Boston, MA

Montserrat College of Art  
1989(D)—Beverly, MA

Nizhoni Medical Center  
1988—Gallup, NM

Emily Flint  
Campus Center,  
Franklin Pierce College  
1988—Rindge, NH

Channing House,  
Arlington Street Church  
1986—Boston, MA

Greenwood School  
1986—Putney, VT

Conway School of  
Landscape Design  
1985—Conway, MA

Rindge Hall,  
Franklin Pierce College  
1985—Rindge, NH

Hathaway Medical Office  
1985(D)—New Bedford, MA

**Institutional (continued)**

Rowe Camp and  
Conference Center  
1982—Rowe, MA

Academia Language School  
1979—Cambridge, MA

Eugene O'Neil Theater  
Green Room & Ticket Ctr.  
1975—Provincetown, MA

**Feasibility Studies**

Quechee Inn  
2003—Quechee, VT

Rhodes Architectural Stone  
Project Development/Feasibility  
2002—Seattle, WA

Royal Numico/GNC  
Strategic Planning  
2002—Boca Raton, FL

April Hill Farm,  
Appalachian Trail Center  
1990—S. Egermont, MA

East Cambridge  
Land Trust  
1990—Cambridge, MA

New England  
Small Farm Institute  
1988—Belchertown, MA

GID: Amesbury Development  
1987—Amesbury, MA

GID: Avis Factory Homes  
1987—Avis, PA

Tisbury-Vineyard Haven  
1986—Martha's Vineyard, MA

Channing House,  
Arlington Street Church  
1986—Boston, MA

Newburyport Waterfront  
Development  
1986—Newburyport, MA

Riverbend Office Park  
1986—Watertown, MA

Architectural Heritage  
1985—Boston, MA

Beacon Street Building  
1985—Somerville, MA

**Feasibility Studies (continued)**

GID: Hull  
Redevelopment  
Authority  
1985—Hull, MA

MGM Building  
1985—Boston, MA

GID: Bosworth Development  
1985—Boston, MA

GID: Brookline Development  
1985—Brookline, MA

**Residential:  
Custom Homes**

Bouley Residence  
2004—S. Kent, CT

Horn Residence  
2003—Boca Raton, FL

Lorenzini Residence  
2003(D)—Mercer Isl., WA

Estler Residence  
2001(D)—Costa Rica

Duncan Residence  
2002—Whitefish, MT

Upchurch Home  
2002—Fort Worth, TX

Jost-Binder Residence  
2000—South Kent, CT

Schuman-Behner Home  
2000—Durango, CO

M. Upchurch Retreat  
1999—Fort Worth, TX

J. Upchurch Residence  
1998(D)—Fort Worth, TX

Duncan Retreat  
1998(D)—Redmond, WA

Duncan Farm  
1995(D)—Redmond, WA

Flores Residence  
1994(D)—Kirkland, WA

Ross-Beattie Residence  
1994(D)—Black Point, WA

Condit Residence  
1993—North Bend, WA

Jones Vacation House  
1992(D)—Whidbey, WA

Drislane Guest House  
1990(D)—Beverly, MA

Wallace Vacation House  
1991(D)—Newry, ME

(D) *Design services only  
Project not built to date*



**Residential:  
Custom Homes (continued)**

Hamilton Residence  
1988—Carlisle, MA

Lordan Residence  
1987(D)—Hamilton, MA

Swain Residence  
1987—Marblehead, MA

Truslow Residence  
1986—St. John, Virgin Islands

Beinecke Residence  
1985—Williamstown, MA

Shapiro Residence  
1985—Manchester, MA

Wallace Guest House  
1985(D)—Edgartown, MA

Barmann Residence  
1984(D)—Hollis, NH

**Residential:  
Architectural  
Interiors**

Phinney Ridge Project  
2001—Seattle, WA

Duncan Resizdence  
2002(D)—Whitefish, MT

Upchurch Home  
2002—Fort Worth, TX

Lorenzini Residence  
2001—Mercer Isl., WA

Swain Retreat  
1999—Seattle, WA

Westbrook Home  
1999—San Anselmo, CA

Duncan Retreat  
1998(D)—Redmond, WA

Duncan Farm  
1995(D)—Redmond, WA

Watson Play Loft  
1997—Seattle, WA

MacIntosh Residence  
1993—Redmond, WA

Jones Residence  
1992—Seattle, WA

Stanford Residence  
1991—Seattle, WA

Truitt Loft  
1989(D)—Boston, MA

Keane Residence  
1988—Jamaica Plain, MA

Karp Residence  
1986—Newton, MA

Burnette Residence  
1985—Boston, MA

Shapiro Residence  
1985—Manchester, MA

Todd Residence  
1985—Boston, MA

(D) *Design services only  
Project not built to date*

**Residential:  
Architectural  
Interiors (continued)**

Cummer-Lyle Residence  
1984—Cambridge, MA

Lack Residence  
1984—Boston, MA

Olmsted-Derby Residence  
1983(D)—Boston, MA

Jakuc Residence  
1981—Boston, MA

Zimarro Residence  
1981—Jamaica Plain, MA

Rodriguez Residence  
1979—Boston, MA

**Residential:  
Additions & Renovations**

Cornfield Residence  
2004—Seattle, WA

Benson Residence  
2004—Seattle, WA

Tanner Residence  
2004—Seattle, WA

Condit Guesthouse  
2004—Redmond, WA

Jones Residence  
2003—Seattle, WA

Sutherland Residence  
2001—Seattle, WA

Condit  
Storybook Farm  
Barn Renovations  
2000—Redmond, WA

Freshley-Hess Home  
2000—Seattle, WA

Swain Retreat  
1999—Seattle, WA

Creatura Residence  
1995—Fox Island, WA

Eckert Residence  
1995—W Seattle, WA

Miner-Miller Residence  
1995—Bellevue, WA

Moudon-Seferis Home  
1995—Seattle, WA

Gibson-Braden Residence  
1994(D)—Seattle, WA

Jones Residence  
1994—W Seattle, WA

Moudon-Seferis  
Boat House  
1994—Seattle, WA

Blanchard-Sutton Residence  
1993—Seattle, WA

**Residential:  
Additions & Renovations (continued)**

Goluska Residence  
1993—Seattle, WA

MacIntosh Residence  
1993—Redmond, WA

Seferis Houseboat  
1993—Seattle, WA

Hunt Residence  
1992—Seattle, WA

Rayfield Residence  
1992—Seattle, WA

Rhodes-Sorensen House  
1992—Seattle, WA

Wahl Residence  
1992(D)—Seattle, WA

Daniel Residence  
1991—Seattle, WA

M. Kellogg,  
April Hill Farm  
1991—S. Egermont, MA

Irl Wallace Residence  
1991(D)—Gallup, NM

Berry Residence  
1990—North Easton, MA

Giles Residence  
1990—Framingham, MA

Bruno Villa  
1989(D)—Cohasset, MA

McKinnon Main House  
1988—Argyle, NS, Canada

McKinnon Guest House  
1988—Argyle, NS, Canada

Boyd Residence  
1987(D)—Sudbury, MA

Jacques Residence  
1987(D)—Wayland, MA

Russo Residence  
1987—Boston, MA

**Residential:  
Additions & Renovations (continued)**

Oreskovic Residence  
1986—Marblehead, MA

Agee Residence  
1985(D)—Osterville, MA

Barbour Residence  
1985—Framingham, MA

Clancy Residence  
1985—Winchester, MA

Norton Residence  
1985—Cambridge, MA

Scholnick Residence  
1985(D)—Boston, MA

Andrus Residence  
1984—Winchester, MA

Keppleman Residence  
1984(D)—Litchfield, CT

Licht Residence  
1984—Lexington, MA

Bader Residence  
1983—St. Petersburg, FL

Harsch Residence  
1983—Williamstown, MA

Kittredge Residence  
1982(D)—Canterbury, NH

Knight Residence  
1982—Cambridge, MA

DiPietro Residence  
1981(D)—Brookline, MA

Porter Residence  
1979—Hyannis, MA

Scardino Residence  
1979—Boston, MA

Rankin Residence  
1977(D)—Falmouth, MA

Ellen & Pete Swain Home  
1977—Falmouth, MA

**Residential:  
Multi-Family  
Urban**

Putnam Hall  
1989—Orange, MA

776-780 Tremont Street  
1987—Boston, MA

Newburyport,  
Waterfront Development  
1987(D)—Newburyport, MA

1045 Hollins Street  
1986—Baltimore, MD

1047 Hollins Street  
1986—Baltimore, MD

Market Mews Townhouses,  
1100 Hollins Street  
1986—Baltimore, MD

1204 Hollins Street  
1986—Baltimore, MD

1206 Hollins Street  
1986—Baltimore, MD

1208 Hollins Street  
1986—Baltimore, MD

1210 Hollins Street  
1986—Baltimore, MD

1213 Hollins Street  
1986—Baltimore, MD

1217 Hollins Street  
1986—Baltimore, MD

1219 Hollins Street  
1986—Baltimore, MD

1221 Hollins Street  
1986—Baltimore, MD

1223 Hollins Street  
1986—Baltimore, MD

1225 Hollins Street  
1986—Baltimore, MD

1227 Hollins Street  
1986—Baltimore, MD

**Residential:  
Multi-Family  
Urban (continued)**

1229 Hollins Street  
1986—Baltimore, MD

1231 Hollins Street  
1986—Baltimore, MD

1233 Hollins Street  
1986—Baltimore, MD

1235 Hollins Street  
1986—Baltimore, MD

1237 Hollins Street  
1986—Baltimore, MD

1307 Hollins Street  
1986—Baltimore, MD

1321 Hollins Street  
1986—Baltimore, MD

1322 Hollins Street  
1986—Baltimore, MD

1328 Hollins Street  
1986—Baltimore, MD

1332 Hollins Street  
1986—Baltimore, MD

51 Arlington Street  
1986—Baltimore, MD

15 S. Arlington Street  
1986—Baltimore, MD

20 S. Arlington Street  
1986—Baltimore, MD

17 Lancaster Street  
1985—Cambridge, MA

27 Greenwich Park  
1982—Boston, MA

601 Tremont Street  
1981—Boston, MA

92 Waltham Street  
1981—Boston, MA

7 Concord Square  
1980(D)—Boston, MA



**Residential:  
Multi-Family  
Urban (continued)**

10 Concord Square  
1980—Boston, MA

12 Concord Square  
1980(D)—Boston, MA

36 Claremont Park  
1979—Boston, MA

163 College Avenue  
1979(D)—Somerville, MA

90 Putnam Avenue  
1979—Cambridge, MA

18 Lancaster Street  
1978—Cambridge, MA

**Residential:  
Multi-Family  
Suburban/Rural**

Windsor Gardens  
1990—Norwood, MA

Hall Estate Community,  
Phase II  
1990(D)—Hull, MA

Windsor Gardens  
1989—Islip, NY

Hall Estate Community  
1989—Hull, MA

North Shaker Village  
1989—Enfield, NH

Butler Two Family  
1988—Yarnouth, Nova Scotia

Dyer Cove  
1987(D)—Franklin, NH

Gedney Farm  
1987(D)—New Marlborough, MA

Shaker Landing  
1987—Enfield, NH

Deer Point  
1986(D)—Moultonboro, NH

Bay Farms  
1985(D)—Duxbury, MA

Samoset at  
Winnepesaukee  
1983—Gilford, NH

**Residential:  
Landscape  
Design**

Jones Residence  
2003—Seattle, WA

Horn Landscape  
2003—Boca Raton, FL

Phinney Project  
2002—Seattle, WA

Condit  
Storybook Farm  
2002—Redmond, WA

Duncan Residence  
2002—Whitefish, MT

Upchurch Home  
2002—Fort Worth, TX

Lorenzini Residence  
2001—Mercer Isl., WA

Jost-Binder Residence  
2000—South Kent, CT

Schuman-Behner Home  
2000—Durango, CO

Swain Retreat  
1993—Seattle, WA

Duncan Farm  
1995(D)—Redmsod, WA

Duncan Retreat  
1995(D)—Redmsod, WA

Griot Residence  
1995—Fox Island, WA

Flores Residence  
1994(D)—Kirkland, WA

Jones Residence  
1994—W. Seattle, WA

Swain Residence  
1993—Seattle, WA

Jones Residence  
1992—Seattle, WA

**Residential:  
Landscape  
Design (continued)**

Drislane Residence  
1991—Beverly, MA

Hall Estate Community  
1989—Hull, MA

Bruno Villa  
1989(D)—Cohasset, MA

Lordan Residence  
1987(D)—Hamilton, MA

Hamilton Residence  
1986—Carlisle, MA

Swain Residence  
1986—Marblehead, MA

Bay Farm Community  
1985(D)—Duxbury, MA

Norton Residence  
1985—Cambridge, MA

Shapiro Residence  
1985—Manchester, MA

Lack Residence  
1984—Boston, MA

Bader Residence  
1983—St. Petersburg, FL

Samoset at Winnepesaukee  
1983—Gilford, NH

Jakuc Residence  
1981—Boston, MA

Licht Residence  
1981—Lexington, MA

18 Lancaster Street  
1978—Cambridge, MA

**Residential:  
Master/Site  
Planning**

Condit  
Storybook Farm  
2001—Redmond, WA

Rhodes Decatur Retreat  
2000—Decatur, WA

Duncan Residence  
2002—Whitefish, MT

Upchurch Home  
2002—Fort Worth, TX

Lorenzini Residence  
2001—Mercer Isl., WA

Sutherland Residence  
2001—Seattle, WA

Freshley-Hess Home  
2000—Seattle, WA

Jost-Binder Residence  
2000—South Kent, CT

Schuman-Behner Home  
2000—Durango, CO

Creatura Residence  
1995—Fox Island, WA

Eckert Residence  
1995—W Seattle, WA

Miner-Miller Residence  
1995—Bellevue, WA

Swain Retreat  
1993—Seattle, WA

Duncan Farm  
1995(D)—Redmond, WA

Duncan Retreat  
1995(D)—Redmond, WA

Griot Residence  
1995—Fox Island, WA

Condit Residence  
1993—North Bend, WA

**Residential:  
Master/Site  
Planning (continued)**

Jones Vacation House  
1993—Whidbey, WA

Astrid Curtis  
1990—Swan Island, ME

Hall Estate Community  
1989—Hull, MA

Newton  
Mixed-Use Project,  
General Investment and  
Development Co.  
1989—Newton, MA

Land Planning &  
Management Foundation, Inc.  
1987—Concord, MA

McKinnon's Neck  
Conservation Trust  
1988—Argyle, NS, Canada

Dyer Cove  
1986—Franklin, NH

Newburyport,  
Waterfront Development  
1986(D)—Newburyport, MA

Bay Farms  
1985(D)—Duxbury, MA

The Farm  
1984(D)—Laconia, NH

Deer Point  
1984—Moultonboro, NH

Hoka Lea  
1984—Kukuihaele, HI

Samoset at Winnepesaukee  
1982—Gilford, NH

**Miscellaneous**

K. B. Swaim Deck  
1990(D)—Cambridge, MA

Moore Painting Studio  
1990(D)—Sewanee, TN

Conway Design Associates  
1989—Conway, MA

First Night Boston:  
Future 2076  
1986—Boston, MA

Hoka Lea Tent Structure  
1984—Kukuihaele, HI

Matarazzo Design  
1981—Concord, NH

Tanning Booth  
Prototype  
1980—Boston, MA

Starr Photo Studio  
1979—Ipswich, MA

Fouser Painting Studio  
1978—Ipswich, MA

R. Smith Deck  
1975—Tallahassee, FL

(D) *Design services only  
Project not built to date*





